

# Bonhams



## California Jewels

Los Angeles | December 12, 2019



# California Jewels

Los Angeles | Thursday December 12, 2019, at 10am and 2pm

## BONHAMS

7601 West Sunset Blvd,  
Los Angeles, CA 90046  
[bonhams.com](http://bonhams.com)

## SALE

Session 1: 10am  
Lots 1-182  
Session 2: 2pm  
Lots 183-368

## PREVIEW

### Los Angeles

Saturday, December 7,  
12pm to 5pm  
Sunday, December 8,  
12pm to 5pm  
Monday, December 9,  
12pm to 5pm  
Tuesday, December 10,  
12pm to 5pm  
Wednesday, December 11,  
12pm to 5pm

## SALE NUMBER:

25333

## CATALOG:

\$35.00

## ILLUSTRATIONS

Front cover: Lots 115, 352  
Back cover: Lot 182  
Inside front cover: Lots 52, 181  
Inside back cover: Lot 225

## BIDS

+1 (323) 850 7500  
+1 (323) 850 6090 fax  
Email: [bids.us@bonhams.com](mailto:bids.us@bonhams.com)  
To bid via the internet please visit  
[www.bonhams.com](http://www.bonhams.com)

## Telephone bidding

Bidding by telephone will only  
be accepted on a lot with a low  
estimate in excess of \$1000.

Please note that bids should be  
submitted no later than 4pm on  
the day prior to the sale. New  
bidders must also provide proof  
of identity when submitting bids.  
Failure to do this may result in your  
bid not being processed.

## Live online bidding is available for this sale

Please email [bids@bonhams.com](mailto:bids@bonhams.com)  
with 'live bidding' in the subject  
line 48 hours before the auction  
to register for this service.

## INQUIRIES

### Los Angeles

Emily Waterfall  
Director/Head of Department  
Augustus Poppleton, GG  
Alexandra Schettini  
[alexandra.schettini@bonhams.com](mailto:alexandra.schettini@bonhams.com)  
+1 (323) 436 5508

### New York

Brett O'Connor, Senior  
International Jewelry Director  
Caroline Morrissey,  
Head of Sales, US Jewelry  
Leslie Roskind, Senior Specialist  
Ophelia Lai  
Stephanie Ibonnet  
+1 (212) 461 6519

### San Francisco

Shannon Beck, GG  
Senior Specialist  
+1 (415) 503 3306

Jean Ghika, FGA  
Global Head of Jewelry  
[jean.ghika@bonhams.com](mailto:jean.ghika@bonhams.com)  
+44 207 468 8282

## CLIENT SERVICES

Monday to Friday 9am to 5pm  
+1 (323) 850 7500  
+1 (323) 850 6090 Fax

Please see pages 120 to 123 for  
bidder information including  
Conditions of Sale, after-sale  
collection and shipment.

Please note that irrespective  
of origin, jadeite and rubies (and  
any jewelry pieces that contain  
them) may now be imported into  
the United States.

## REGISTRATION IMPORTANT NOTICE

Please note that all customers,  
irrespective of any previous activity  
with Bonhams, are required to  
complete the Bidder Registration  
Form in advance of the sale. The  
form can be found at the back  
of every catalogue and on our  
website at [www.bonhams.com](http://www.bonhams.com)  
and should be returned by email or  
post to the specialist department  
or to the bids department at  
[bids.us@bonhams.com](mailto:bids.us@bonhams.com)

To bid live online and / or  
leave internet bids please go to  
[www.bonhams.com/auctions/25333](http://www.bonhams.com/auctions/25333)  
and click on the Register to bid link  
at the top left of the page.



# Important Names & Notices

## DIAMONDS, COLORED STONES & PEARLS

The Jewelry department of Bonhams & Butterfields recognizes that there are many various forms of treatments and enhancements used in diamonds and colored stones in order to improve their appearance and or color. Techniques such as heat treatment have been used to improve the color and transparency of both sapphires and rubies in addition to other gemstones. Techniques such as oiling have been used to enhance the clarity of emeralds while dying has been used to effect the color of jade. Techniques such as heat treatment, oiling, resin impregnation, irradiation, color diffusion, dying, fracture filling, and HTHP are just a few off the techniques that are in use today. Prospective buyers are therefore reminded that unless otherwise noted in our catalog description it must be assumed that some form of enhancement may have been used and that such treatment may not always be permanent or detectable and that our estimates have taken such possibilities into account. As a matter of policy, Bonhams & Butterfields endeavors to obtain certificates from recognized gemological laboratories when such certificates are deemed crucial to the authenticity of a gemstone. It is not possible however to gain certificates for all items offered for sale and it is therefore recommended where there is no mention of a certificate that all prospective buyers consult with one of our department specialists prior to purchase of such items.

PLEASE NOTE: A number of laboratories issue certificates that give more detailed descriptions of gemstones, however there may not be consensus between different laboratories on the degrees, or types of treatment for any particular gemstone. Neither is there necessarily consensus between different laboratories, or private appraisers, on the grading of diamonds. All gemstone weights are approximations only and although an independent laboratory grading may be used in the catalog text, we cannot guarantee such gradings.

Images shown may appear smaller or larger than actual size.

Although we endeavor to mention in our descriptions significant defects, needed repairs, absent stones and the like, **WE DO NOT GUARANTEE THAT THE DESCRIPTIONS ARE COMPREHENSIVE.** Please examine all lots carefully. It is the responsibility of the prospective bidder, or his agent, to determine the condition of lots during the preview. Condition reports have been created for most lots in this auction, and are available upon request. Please contact the Jewelry department at least two days prior to the sale date for additional information.

## REGULATED SPECIES MATERIALS AND CITES PERMITS

The export of a lot from the United States or import into certain countries may be subject to export or import regulations, licensure and/or other restrictions; in particular, lots containing plant or animal materials such as ivory, rhinoceros horn, tortoiseshell, coral, whalebone or certain types of woods, irrespective of age or value, may require the granting of one or more export or import licenses or certificates, or may be banned from import altogether by some countries. Moreover, the ability to obtain an export license or certificate does not insure the ability to obtain an import license or certificate in another country. Lots that contain such regulated species materials may also not be eligible for exportation or for re-importation into the United States if they are not at least 100 years of age, and, under current law, lots containing African Elephant Ivory may no longer be re-imported into the United States regardless of age. In addition, resales of lots containing certain regulated species materials may be subject to restrictions in some jurisdictions.

Lots noted in the catalog with a **Y** next to the lot number contain one or more such regulated plant or animal materials. **It is the buyer's responsibility to investigate any such restrictions and to obtain any relevant export or import licenses. Please note that this process is governed by local authorities and may take considerable time. Regardless of any delay in the obtaining of an export or import license or certificate or denial of a license's or certificate's issuance, purchased lots shall be paid for in accordance with the Conditions of Sale, and any such delay or denial shall not serve as the basis for cancellation of any sale.** Prospective buyers are advised to obtain information from the relevant regulatory authorities regarding export and import restrictions, requirements, and costs prior to bidding.

Prospective buyers should also check with their local (e.g. state) regulatory authorities regarding any local restrictions and/or permit requirements that may apply with respect to purchases of regulated species materials, including without limitation purchases of items containing elephant ivory or rhino horn. For example, we are advised that New York buyers of any lot containing elephant or mammoth ivory or rhino horn will be responsible for obtaining a New York State permit before taking possession of the lot within New York State, and that the State of New Jersey has banned the import of items containing elephant or marine mammal ivory or rhino horn into that state.

Upon request, Bonhams can refer the purchaser to a third party agent to assist the purchaser in attempting to obtain the appropriate licenses and/or certificates. However, there is no assurance that any necessary licenses or certificates can be obtained. Please contact the Specialist Department for a suggested list of shipping agents prior to placing a bid if you are uncertain as to whether a lot is subject to export/import license or certificate requirements or related restrictions.

## WATCHES

Although we endeavor to mention in our descriptions significant defects, needed repairs, absent stones and the like, **WE DO NOT GUARANTEE THAT THE DESCRIPTIONS ARE COMPREHENSIVE.** Please examine all watches carefully. It is the responsibility of the prospective bidder, or his agent, to determine the condition of watches during the preview. Except as expressly set forth in the Conditions of Sale, all watches are sold "as is". We do not guarantee the accuracy or operation of any watch function such as timekeeping, chronograph, calendar, repeater or register.

We make no judgments as to whether diamond dials or diamond bezels originated at the factory or are later additions.

# Index

# Including Property From

<u>NAME</u>	<u>LOT NUMBER</u>	
Audemars Piguet . . . . .	338	Property from the Collection of Mrs. H.C. Price
Baume & Mercier . . . . .	288	Property of a Lady
Buccellati . . . . .	366	Property from a Long Island, New York Estate
Bulgari . . . . .	300, 365, 367, 368	Property of the Mulholland Family
Cartier . . . . .	118, 196, 198	Property From a New York Estate
Cellini . . . . .	298	Property of a Thousand Oaks, CA Collector
Chopard . . . . .	103, 200	Property of a San Diego, California Collector
David Webb . . . . .	180	Property of a Calabasas, California Collector
David Yurman . . . . .	33, 246	Property from an Oro Valley, Arizona, Lady
DeBeers . . . . .	165	Property of an Arizona Lady
Dior . . . . .	167	Property from Ronald & Gloria Savin, Rancho Mirage, California
Ebel . . . . .	186	Property of a Palm Springs Collector
Frank Trozzo . . . . .	8, 12	Property of a Los Angeles Lady
Grassy . . . . .	41	Property from the Estate of Joan Z. Steinbrenner
Gucci . . . . .	204	Property from a New York Collection
Gurhan . . . . .	294	Property of a California Lady
Hamilton . . . . .	55, 108	Property from a Canadian Family
House of Taylor . . . . .	247	Property from a New Mexico Estate
Ippolita . . . . .	228	Property of a Prominent Los Angeles Lady
J.E. Caldwell . . . . .	72	Property of a Los Angeles Collector
Kent . . . . .	60	Property of an Arizona Collector
Lalaounis . . . . .	82	Property of a Northern California Collector
Lucien Piccard . . . . .	30	
Marsh & Co. . . . .	5, 6, 7	
Mikimoto . . . . .	65	
Paolo Costagli . . . . .	26, 189, 197, 202, 215	
Patek Philippe . . . . .	277	
Piaget . . . . .	9, 310, 327	
Pomellato . . . . .	51, 286	
Robert Legnazzi . . . . .	206	
Rolex . . . . .	2, 67	
Ruser . . . . .	92, 99	
Schlumberger for Tiffany & Co. . . . .	36	
Tiffany & Co. . . . .	21, 149, 235, 263, 266, 278, 355	
Van Cleef & Arpels . . . . .	94, 140, 222, 265	



# Session One

Lots 1-182  
10am





# Property from the Collection of Mrs. H.C. Price

Lots 1-13



2



3



1



4

1  
**A GREEN TOURMALINE AND DIAMOND RING**

centering a rectangular step-cut tourmaline measuring approximately 17.89 x 14.00mm; mounted in 18k gold; gross weight approximately: 29 grams; size: 7 3/4

**\$1,500 - 2,500**

2  
**A LADY'S DATEJUST WATCH, ROLEX**  
*mounted in 18k gold; gross weight approximately: 59 grams; case size: 28mm; length: 6 1/2in.; signed: Rolex*

**\$2,000 - 3,000**

3  
**A COLORED DIAMOND AND EMERALD RING**  
centering a marquis shaped brilliant-cut colored diamond weighing approximately 1.70cts; mounted in 14k gold; size: 8 1/4 (colored diamond untested for origin of color)

**\$2,000 - 4,000**

4  
**A GRADUATED DIAMOND NECKLACE**  
*mounted in 18k gold; estimated total diamond weight: 9.50cts; length: 17in.*

**\$3,500 - 5,500**





5

**5  
A DIAMOND AND CULTURED PEARL  
BRACELET, MARSH & CO.**

*mounted in 14k white gold and blackened steel; length: 7 1/4in.; unsigned*

**\$1,800 - 2,500**

6

**6  
A CULTURED PEARL AND DIAMOND  
NECKLACE, MARSH & CO.**

*mounted in 14k white gold and blackened steel; estimated total diamond weight: 1.10cts; gross weight approximately; 34 grams; length: 15in.; unsigned*

**\$2,000 - 4,000**

7

**7  
A PAIR OF EAR CLIPS, A RING AND A  
BROOCH, MARSH & CO.**

*mounted in 14k white gold and blackened steel; gross weight approximately: 32 grams; ear clip dimensions: 7/8 x 1/2in.; ring size: 6 1/2; brooch dimensions: 2 7/8 x 2in.; unsigned*

**\$2,000 - 4,000**

# Property from the Collection of Mrs. H.C. Price

Lots 1-13



8



8  
**A PAIR OF BROOCHES AND A GOLD RING, FRANK TROZZO**

mounted in 18k gold; gross weight approximately: 55 grams; pendant dimensions: 1 3/4 x 1 3/4in.; ring size: 8; signed: Trozzo

\$1,500 - 2,500



9



9  
**A LADY'S WATCH, PIAGET**

manual wind movement, in working condition; mounted in 18k gold; case size: 27mm; length: 7 3/4in.; signed: Piaget; numbered: 9007 276416

\$1,000 - 1,500



10



Frank M. Trozzo's creations are a combination of jewelry and sculpture, with a modernist sensibility. With training in Europe and the United States, Trozzo has been called a technical innovator by his peers.

Cf. A. Miller, *Gems and Jewelry Appraising: Techniques of Professional Practice*, New York, Chapman & Hall, 1988, p. 118

10  
**AN ART DECO DIAMOND AND CULTURED PEARL BROOCH TOGETHER WITH A DIAMOND CIRCLE BROOCH**

mounted in platinum; estimated total diamond weight: 4.90cts; pearl brooch dimensions: 2 1/2 x 1 1/4in.; circle brooch dimensions: 1 1/2 x 1 1/4in.

\$1,500 - 2,000



11

12

13

11  
**A DIAMOND AND RUBY LINE BRACELET**  
*mounted in 18k gold; estimated total diamond weight: 1.85cts; length: 7 1/4in.*

**\$1,800 - 2,500**

12  
**A NECKLACE TOGETHER WITH A PENDANT, FRANK TROZZO**  
*Centering a carved chalcedony face and suspending a pear-shaped brilliant-cut pink tourmaline, mounted in 18k gold; gross weight approximately: 65 grams; necklace length: 18in.; pendant dimensions: 1 3/8 x 1 3/4in.; signed: Trozzo*

**\$1,500 - 2,500**

13  
**A DIAMOND RING AND WEDDING BAND**  
*centering an emerald-cut diamond weighing approximately 1.00ct; mounted in platinum; sizes: 6 to 6 1/2*

**\$1,500 - 2,500**



14



15



16



17

## PROPERTY OF A LADY

14  
**TWO PAIRS OF GOLD EAR CLIPS**  
*mounted in 18k gold; gross weight approximately: 70 grams; ear clip lengths: 1 1/2 and 2in.*

**\$1,800 - 3,200**

15  
**AN EMERALD AND DIAMOND BALLERINA RING**  
*centering an oval-shaped brilliant-cut emerald measuring approximately 11.52 x 8.75 x 5.45mm; mounted in 18k gold; estimated total diamond weight: 2.05cts; size: 6 3/4*

**\$1,800 - 2,200**  
**To be sold without reserve**

16  
**A COLORED DIAMOND AND DIAMOND RING**  
*centering a round brilliant-cut diamond weighing 3.04cts; mounted in 18k bi-color gold; remaining diamond weight: 3.02cts; size: 7 1/4; signed: Tremonti (colored diamonds untested for origin of color)*

**\$7,000 - 9,000**

17  
**A GOLD AND DIAMOND COIN PENDANT**  
*centering a Liberty Head five dollar coin dated 1893; mounted in 14k bi-color gold, together with a 18k gold chain; estimated total diamond weight: 1.50cts; gross weight approximately: 40 grams; length: 24 1/4in.*

**\$2,500 - 3,500**





18

18  
**A GOLD NECKLACE, WEINGRILL**  
*mounted in 18k gold; gross weight approximately: 164 grams; length: 12 1/2in.*  
**\$6,500 - 8,500**



20

20  
**A PAIR OF JADE, HARD STONE AND DIAMOND EAR PENDANTS**  
*mounted in 18k gold; dimensions: 2 1/4 x 1in.*  
**\$1,200 - 1,500**



19

19<sup>Y</sup>  
**A CORAL AND DIAMOND SWAN BYPASS RING**  
*mounted in 18k gold; size: 8*  
**\$1,200 - 1,500**

Please note this item cannot be shipped internationally as it may contain endangered materials.



21

23

22



24



25



26

21  
**A TOPAZ RING, TIFFANY & CO.**  
centering a round modified brilliant-cut topaz measuring approximately 19.73 x 19.82 x 14.13mm; mounted in 14k gold; size: 6 1/2; signed: Tiffany & Co.; numbered: 1519

**\$1,000 - 1,500**

22  
**A DOUBLE STRAND GREEN BERYL BEAD NECKLACE**  
mounted in 18k gold; gross weight approximately: 140 grams; length: 28 1/2in.

**\$1,000 - 1,500**

23  
**A CITRINE, DIAMOND AND 14K GOLD BANGLE BRACELET AND PAIR OF EARRINGS, CIRCA 1970**  
square step-cut citrine approximately 26.5 x 24.6 x 22.9mm; gross weight approximately: 134 grams; bangle diameter: 2 1/8in.; earring length: 1 7/8in.

**\$2,000 - 3,000**

24  
**A COLORED DIAMOND AND DIAMOND RING**  
mounted in 14k bi-color gold; estimated total diamond weight: 2.00cts; size: 6 3/4 (colored diamonds untested for origin of color)

**\$800 - 1,200**

25  
**A DIAMOND BOMBE RING**  
mounted in 18k bi-color gold; size: 4 3/4  
**\$800 - 1,000**  
To be sold without reserve

26  
**A PAIR OF TURQUOISE AND AMBER EAR PENDANTS, PAOLO COSTAGLI**  
mounted in 18k white gold; dimensions: 2 3/4 x 5/8in.; with signed pouch

**\$1,500 - 1,800**



27



28



29

**PROPERTY OF A LADY**

27  
**PAIR OF DIAMOND EAR CLIPS**  
*mounted in 14k gold; estimated total diamond weight: 1.35cts; length: 1 1/4in*

**\$1,500 - 2,200**

28  
**AN OPAL CABOCHON RING**  
*centering a round shaped cabochon-cut opal measuring approximately 19.33 x 19.21 x 9.90mm; mounted in 14k gold; size: 7 1/2*

**\$1,500 - 2,000**

29  
**A TURQUOISE BEAD FESTOON NECKLACE**  
*centering graduated turquoise beads measuring approximately from 5.76 to 12.15mm; mounted in 18k gold; gross weight approximately: 113 grams; length: 15in.*

**\$7,000 - 9,000**

30  
**A PAIR OF LAPIS LAZULI AND TURQUOISE EAR PENDANTS, LUCIEN PICCARD**  
*mounted in 14k gold; gross weight approximately: 27 grams; dimensions: 2 x 7/8in.; signed: Lucien*

**\$1,000 - 1,500**

31  
**A LADY'S 18K GOLD AND DIAMOND BRACELET WATCH**  
*movement signed Longines; estimated total diamond weight: 11.25cts; gross weight approximately: 38 grams; length: 7in.*

**\$3,500 - 4,500**

32  
**A DIAMOND RING**  
*centering a round brilliant-cut diamond weighing approximately 1.15cts; mounted in 14k gold; size: 8*

**\$1,000 - 1,500**

33  
**A PEARL AND PAVÉ DIAMOND STATION NECKLACE, DAVID YURMAN**  
*mounted in 18k gold; gross weight approximately: 105 grams; length: 33 1/2in.; signed: DY*

**\$4,500 - 5,500**

**PROPERTY FROM A LONG ISLAND, NEW YORK ESTATE**

34  
**A TURQUOISE AND DIAMOND RING**  
*centering a rectangular mixed-cut cabochon turquoise measuring approximately: 17.12 x 14.62 x 11.12mm; mounted in 14k gold; estimated total diamond weight: 4.10cts; size: 5 3/4*

**\$2,500 - 3,500**





30



31



33



34



32



36



35



37

35

**A MABÉ PEARL AND DIAMOND RING**

centering a mabé pearl measuring approximately 16.83 x 16.52 x 13.73mm; mounted in platinum; estimated total diamond weight: 3.30cts; size: 6 1/4

**\$1,000 - 1,500**

36

**A DIAMOND AND ENAMEL SEAHORSE BROOCH, SCHLUMBERGER FOR TIFFANY & CO.**

mounted in platinum and 18k gold; dimensions: 2 5/8 x 3/4in.; signed: Tiffany & Co. Schlumberger

**\$3,000 - 5,000**

37

**A PEARL TORSADE BRACELET**

set with twelve strands of cultured pearls each measuring approximately 5.00mm; mounted in 14k gold; gross weight approximately: 111 grams; length: 9in.

**\$1,000 - 1,500**







38

39





40



41

42



43

38  
**A NEPHRITE JADE CHINESE 'BATS' NECKLACE**  
*mounted in 14k gold; gross weight approximately: 125 grams; length: 24 1/2in.*

**\$1,000 - 1,500**

Accompanied by Mason Kay report, dated November 13, 2019, stating: Natural Nephrite Jade.

39  
**A PAIR OF QUARTZ AND DIAMOND EARRINGS**  
*centering two checkerboard-cut double cabochons measuring approximately 19.40 x 8.99 x 4.80mm; mounted in 18k gold; dimensions: 1 3/4 x 21/32in.*

**\$1,000 - 1,500**

40  
**A PAVÉ DIAMOND AND RUBY RING**  
*mounted in 18k gold; estimated total diamond weight: 1.20cts; size: 6 1/4*

**\$1,000 - 1,500**

41  
**A SET OF TIGER'S EYE AND 18K GOLD CUFFLINKS WITH BOX, GRASSY, MADRID**  
*centering four tiger's eye spheres measuring approximately 8.88 to 11.70mm; mounted in 18k gold; dimensions 1 3/8 x 1/2in.*

**\$600 - 800**

42  
**A PAIR OF ROSE-CUT TOURMALINE STATION NECKLACES**  
*mounted in 18k gold; lengths: 24 and 36in.*

**\$2,000 - 3,000**

43  
**A CARVED EMERALD AND DIAMOND PENDANT**  
*centering a carved emerald measuring approximately 46.33 x 23.23 x 4.54mm; mounted in 18k gold; estimated total diamond weight: 1.85cts; length: 30in.*

**\$1,600 - 2,000**



44

44

**A PAIR OF EMERALD AND DIAMOND EARRINGS**

centering a pair of pear shaped brilliant-cut emeralds measuring approximately 7.85 x 5.82 x 2.87mm; mounted in 14k rose gold; estimated total diamond weight: 2.40cts; length: 1 1/4in.

**\$1,200 - 1,500**

45

**A PAIR OF DIAMOND HOOP EARRINGS**

mounted in 18k rose gold; estimated total diamond weight: 4.85cts; dimensions: 1 1/2 x 1 1/2in.

**\$2,000 - 3,000**

47

46

**A DIAMOND LINE NECKLACE**

mounted in 18k rose gold; estimated total diamond weight: 12.80cts; gross weight approximately: 34 grams; length: 32in.

**\$4,000 - 6,000**

46

47

**A DIAMOND FLOWER BROOCH, FRENCH**

mounted in 18k gold; gross weight approximately: 25 grams; dimensions: 2 1/2 x 2in.

**\$2,000 - 3,000**



48



49



50



51

48  
**A PAIR OF COLORED DIAMOND AND DIAMOND CONVERTIBLE EARRINGS**  
 centering two cushion shaped brilliant-cut diamonds weighing 2.05cts; mounted in 18k bi-color gold; known remaining diamond weight: 1.63cts; ear pendant drop: 1 3/8 x 1/2in.; signed: Tremonti (colored diamonds untested for origin of color)  
**\$4,500 - 5,500**

49  
**A DIAMOND AND TURQUOISE BIRD BROOCH**  
 centering an oval shaped cabochon-cut turquoise measuring approximately 24.30 x 18.68 x 8.51mm; mounted in 18k gold; gross weight approximately: 27 grams; dimensions: 2 3/4 x 1 1/4in.  
**\$1,000 - 1,500**

50  
**A DIAMOND CURB LINK CHAIN**  
 mounted in bi-color 18k gold; estimated total diamond weight: 3.55cts; gross weight approximately: 95 grams; length: 16in.  
**\$5,000 - 7,000**

51  
**A PAVE DIAMOND HAREM RING, POMELLATO**  
 mounted in 18k bi-color gold; size: 6; signed: Pomellato  
**\$1,500 - 2,000**



52



53

52

**AN EMERALD AND DIAMOND RING**

centering a rectangular step-cut emerald weighing 4.78cts; mounted in platinum and 18k gold; estimated total diamond weight: 1.35cts; size: 6 1/4

**\$14,000 - 18,000**

Accompanied by GIA report #2151389659, dated April 22, 2018, stating the Emerald as: Natural Beryl, with indications of clarity enhancement (F1).

53

**A DIAMOND NECKLACE AND BRACELET SET, UNOERRE**

mounted in 18k bi-color gold; estimated total diamond weight: 13.95 cts; gross weight approximately: 118 grams; necklace length: 17 1/2in.; bracelet length: 7 3/4in.; necklace signed: Unoerre

**\$10,000 - 12,000**





54



57



55



56

54  
**A DIAMOND RING, FRENCH**

centering an oval shaped brilliant-cut diamond measuring approximately 6.68 x 5.58 x 3.53mm; mounted in 18k gold and platinum; estimated total diamond weight: 1.60cts; size: 5 1/2; with French assay marks

**\$1,200 - 1,800**

**PROPERTY OF THE MULHOLLAND FAMILY**

55  
**A LADIES DIAMOND, EMERALD, AND PLATINUM BRACELET WRISTWATCH, HAMILTON**

mechanical movement, black dial; case diameter: 19mm; length: 6 7/8in.; dial and movement signed

**\$1,800 - 3,200**

56  
**A DIAMOND AND EMERALD SPRAY BROOCH**

centering a round brilliant-cut emerald measuring approximately 5.88 x 5.90 x 3.41mm; mounted in platinum; estimated total diamond weight: 3.80cts; dimensions: 2 1/2 x 1 1/2in.; deficient one diamond

**\$1,500 - 2,000**

57  
**A DIAMOND AND EMERALD BOMBÉ RING**

mounted in 18k bi-color gold; estimated total diamond weight: 3.05cts; size: 6

**\$2,500 - 3,500**



59



58



60



61

**PROPERTY FROM A NEW YORK ESTATE**

**58  
A CULTURED PEARL AND DIAMOND  
PIN, CIRCA 1900**

cultured pearls measuring approximately:  
3.8 to 6.5mm; *mounted in platinum and  
silver; estimated total diamond weight:  
1.70cts; dimensions: 1 3/4 x 1 1/4in.*

**\$2,000 - 3,000**

**59  
A DIAMOND BROOCH, CIRCA 1915**  
centering an old European-cut diamond  
approximately: 2.80cts; *mounted in platinum;  
estimated remaining diamond weight:  
1.20cts; length: 2 9/16in.*

**\$7,000 - 9,000**

**PROPERTY OF A THOUSAND OAK, CA  
COLLECTOR**

**60  
A LADY'S DIAMOND AND PLATINUM  
WRISTWATCH, KENT**

mechanical movement, *dial dimensions:  
11mm x 23mm; length 5 3/4 in.; gross  
weight approximately: 39.2 grams; diamond  
weight: 9.05cts*

**\$8,000 - 10,000**

**61  
A PAIR OF COLORED DIAMOND AND  
DIAMOND EAR CLIPS**  
centering two european-cut diamonds  
measuring approximately 5.52 x 5.55mm;  
*mounted in 18k white gold; estimated  
remaining diamond weight: 3.40cts;  
dimensions: 1 1/4 x 3/4in.* (colored diamonds  
untested for origin of color)

**\$2,500 - 3,500**

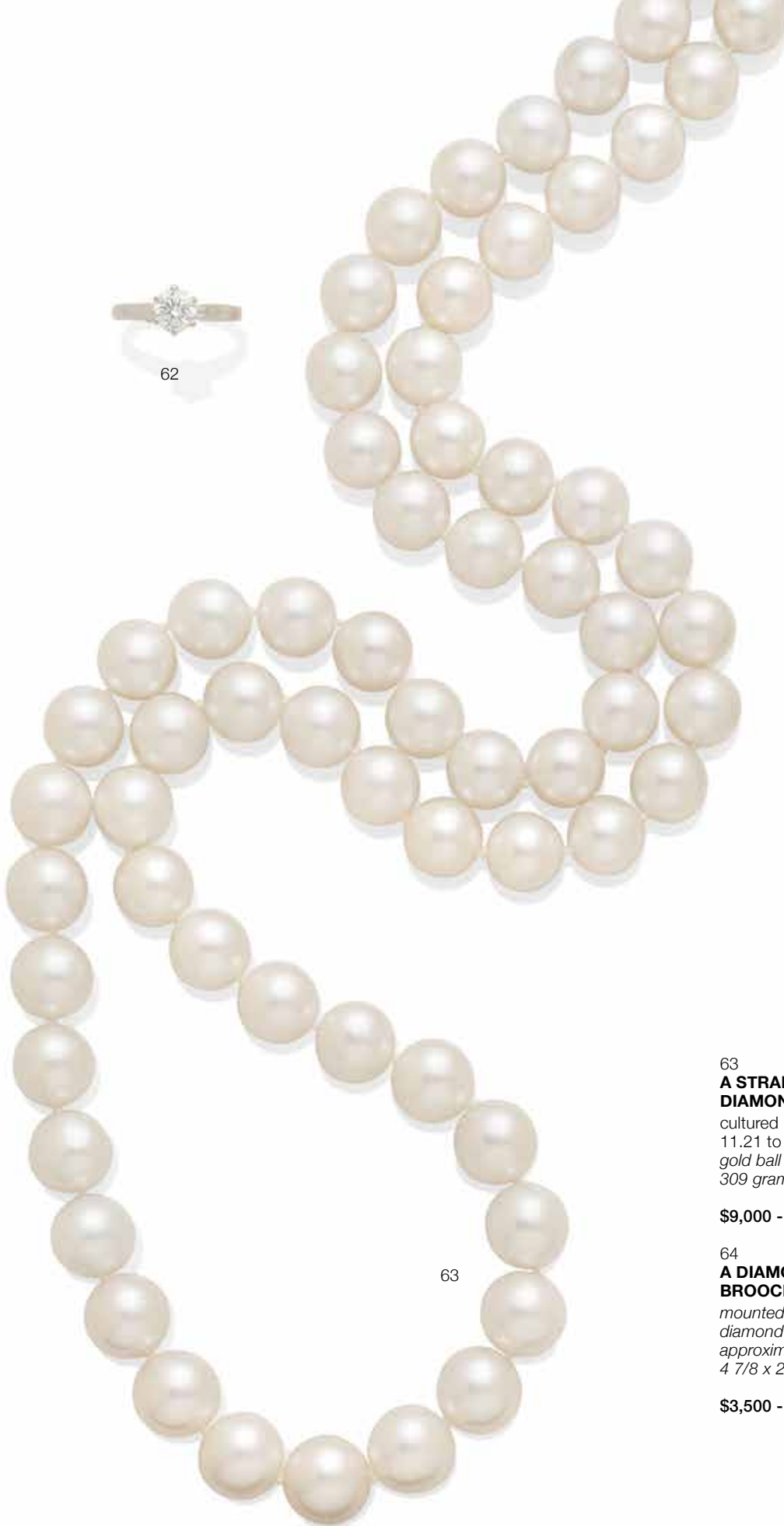
**62  
A COLORED DIAMOND RING**  
centering a round brilliant-cut diamond  
measuring 6.87 x 6.97 x 4.14mm; *mounted  
in 18k white gold; known diamond weight:  
1.20ct; size: 8 1/4*

**\$8,000 - 12,000**

Accompanied by GIA report #1122194840,  
dated June 8, 2008, stating the Diamond as:  
Natural, Very Light Green.



62



63



64

63

**A STRAND OF CULTURED PEARLS WITH DIAMOND CLASP**

cultured pearls measuring approximately 11.21 to 15.03mm; fixed to an 18k white gold ball clasp; gross weight approximately: 309 grams; length: 54 1/2in.

**\$9,000 - 12,000**

64

**A DIAMOND AND EMERALD DROP BROOCH**

mounted in 18k white gold; estimated total diamond weight; 4.80cts; gross weight approximately: 33 grams; dimensions: 4 7/8 x 2 1/2in.

**\$3,500 - 4,500**





65



66



67

**65  
AN EMERALD AND DIAMOND RING,  
MIKIMOTO**

centering a rectangular step-cut emerald measuring approximately 4.82 x 4.29 x 2.87mm; mounted in platinum; size: 4 1/2; with Mikimoto hallmark

**\$800 - 1,000**  
To be sold without reserve

**66  
A PAIR OF EMERALD MULTI-STRAND  
BEAD NECKLACES TOGETHER WITH A  
MATCHING PAIR OF EAR CLIPS**

earrings mounted in 14k gold; gross weight approximately: 155 grams; necklace lengths: 34 and 36in.; ear clip dimensions: 1 3/8 x 3/4in.

**\$2,000 - 3,000**





68



70



69

**PROPERTY OF A SAN DIEGO, CALIFORNIA COLLECTOR**

67  
**AN 18K GOLD AND RUBY 'DATEJUST' WRISTWATCH, ROLEX**

watch case measures approximately 25mm, automatic movement; mounted in 18k gold; gross weight approximately: 55 grams; length: 6in.

**\$3,500 - 4,500**

68  
**A PAVÉ DIAMOND STATION NECKLACE**

mounted in 18k gold; estimated total diamond weight: 1.30cts; length: 16 1/4in.

**\$1,500 - 2,000**

69<sup>Y</sup>  
**A PAIR OF CORAL AND DIAMOND EARRINGS**

mounted in 18k gold; gross weight approximately: 29 grams; dimensions: 1 1/8 x 3/4in.

**\$1,500 - 2,500**

Please note this item cannot be shipped internationally as it may contain endangered materials.

70<sup>Y</sup>  
**A CORAL, ONYX AND DIAMOND RING**

centering a round cabochon-cut coral measuring approximately 17.77 x 17.86 x 7.33mm; mounted in 18k gold; size: 7 1/2

**\$1,200 - 1,500**

Please note this item cannot be shipped internationally as it may contain endangered materials.



71



72



73



75



74

**71  
A SAPPHIRE AND DIAMOND NAVETTE RING**

*mounted in 18k gold; estimated total diamond weight: 1.20cts; size: 10 1/2*

**\$1,500 - 2,000**

**72  
A SHELL MOTIF BRACELET WATCH, J.E. CALDWELL, CIRCA 1945**

*mounted in 14k gold; gross weight approximately: 50 grams; case diameter: 23mm; length: 7in.; dial signed: J.E. Caldwell*

**\$3,000 - 5,000**

**73  
A GOLD COIN AND DIAMOND RING**

*centering a 1915 \$2.5 gold coin; mounted in 14k bi-color gold; size: 8 3/4*

**\$800 - 1,200**

**74  
A PAIR OF HARD-STONE AND DIAMOND EAR PENDANTS**

*comprised of lapis lazuli, turquoise, and coral; mounted in 18k gold; gross weight approximately: 29 grams; dimensions: 2 3/4 x 5/8in.*

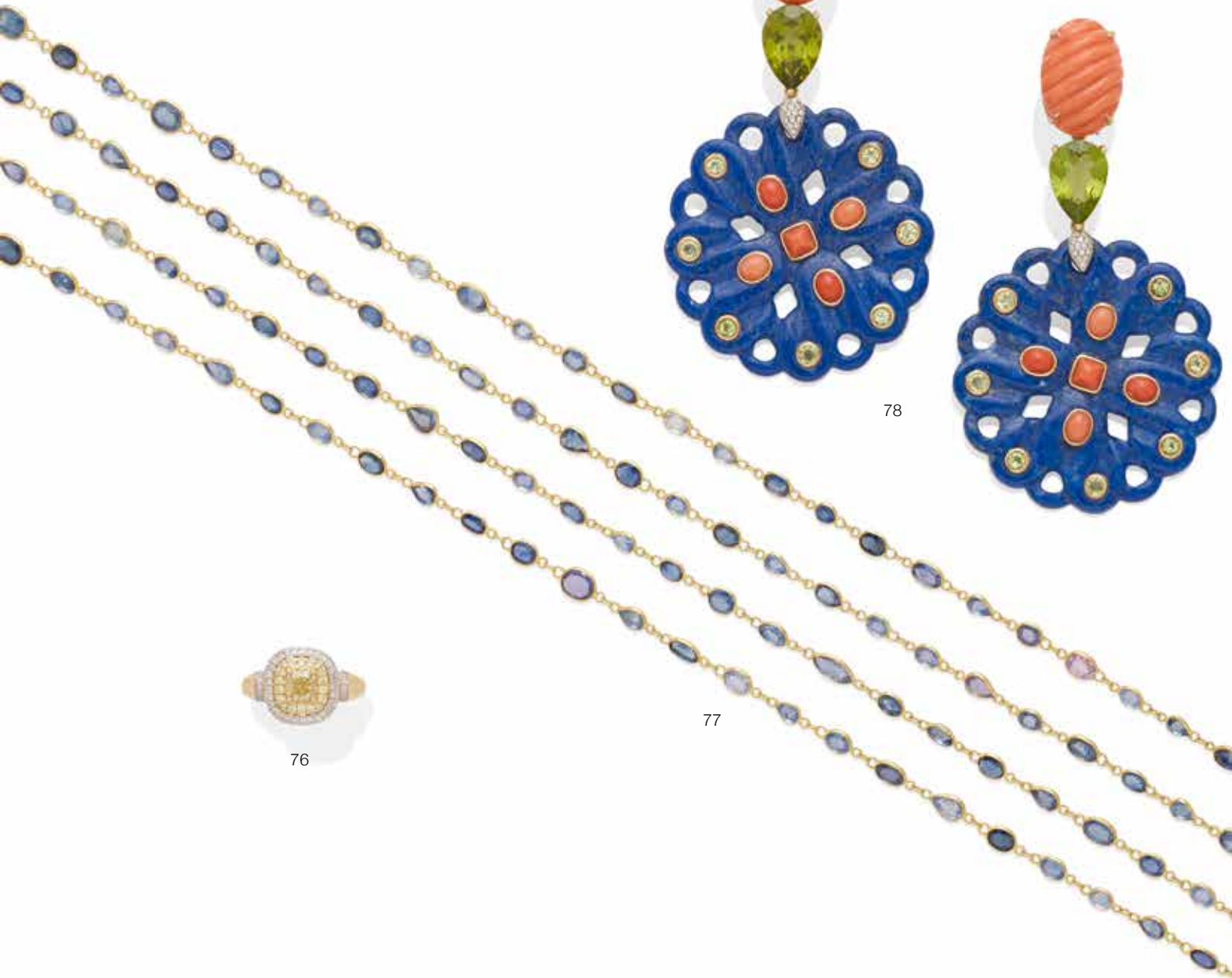
**\$1,200 - 1,500**

**75<sup>Y</sup>  
A CORAL AND DIAMOND PENDANT ON CHAIN**

*centering a round coral bead approximately: 19.7mm; mounted in 18k gold; pendant length: 1 1/2in.; chain length: 18in.*

**\$1,500 - 2,000**

Please note this item cannot be shipped internationally as it may contain endangered materials.



76

**76  
A COLORED DIAMOND AND DIAMOND RING**

centering a cushion shaped brilliant-cut diamond weighing 1.00ct; mounted in 18k gold; size: 7 1/4; signed: Tremonti

**\$3,000 - 5,000**

Accompanied by GIA report #5182531496, dated July 10, 2017, stating the Diamond as: Natural, Fancy Light Yellow. SI2 clarity.

77

**77  
A SAPPHIRE STATION NECKLACE**

mounted in 18k gold; gross weight approximately: 25 grams; length: 70in.

**\$2,500 - 3,500**

78

**78<sup>Y</sup>  
A PAIR OF LAPIS LAZULI, CORAL AND PERIDOT EAR PENDANTS**

mounted in 18k gold; gross weight approximately: 39 grams; ear pendant drop: length: 3 1/4in.

**\$1,800 - 2,200**

Please note this item cannot be shipped internationally as it may contain endangered materials.



79



80



81

82

79  
**A PAIR OF CARVED LAPIS LAZULI AND  
DIAMOND EAR CLIPS**

*mounted in 18k gold; estimated total  
diamond weight: 2.40cts; gross weight  
approximately: 27 grams; dimensions: 1 1/4  
x 3/4in.*

**\$1,800 - 2,200**

80  
**A GROUP OF FOUR BEZEL-SET  
DIAMOND RINGS**

*each ring comprising two bezel-set round  
brilliant-cut diamonds; mounted in 18k gold;  
estimated total diamond weight: 1.50cts;  
sizes: 6 1/4 to 7 1/4*

**\$1,200 - 1,800**

81  
**AN IMPERIAL TOPAZ AND DIAMOND  
RING**

*centering a cushion shaped brilliant-cut  
imperial topaz measuring approximately  
14.52 x 13.97 x 10.12mm; mounted in  
14k gold; estimated total diamond weight:  
1.65cts; size: 6 1/4*

**\$5,000 - 7,000**

**PROPERTY OF A CALABASAS,  
CALIFORNIA COLLECTOR**

82  
**A SAPPHIRE, RUBY AND DIAMOND  
NECKLACE, ILIAS LALAOUNIS**

*mounted in 18k gold; 14k gold chain  
extension; gross weight approximately: 111  
grams; length: 14 1/2in.; signed: Lalaounis;  
with signed pouch*

**\$5,000 - 7,000**





83  
**A DIAMOND PENDANT**  
*mounted in 14k gold; estimated total diamond weight: 2.50cts; dimensions: 1 7/8 x 1/2in.*

**\$4,500 - 5,500**

84  
**A SAPPHIRE AND DIAMOND BRACELET**  
*mounted in 18k gold; gross weight approximately: 68 grams; length: 6 3/4in.*

**\$3,000 - 5,000**

85  
**A CITRINE NECKLACE**  
*centering a pear shaped cabochon-cut citrine measuring approximately 28.64 x 22.68 x 12.16mm; mounted in 18k gold; gross weight approximately: 45 grams; length: 16 1/4in.*

**\$3,000 - 5,000**

86  
**A LAPIS LAZULI AND DIAMOND RING**  
*centering a round cabochon-cut lapis lazuli measuring approximately 14.46 x 14.67 x 13.07mm; mounted in 18k gold; gross weight approximately: 26 grams; size: 7*

**\$1,600 - 1,800**

87  
**A PAIR OF LAPIS LAZULI AND TOURMALINE EARRINGS**  
*mounted in 18k gold; dimensions: 1 x 1in.*

**\$1,000 - 1,500**

# Property from an Oro Valley, Arizona, Lady

Lots 88-93



88

89

90

88  
**A PAIR OF CULTURED PEARL  
BRACELETS**  
*mounted in 14k gold; gross weight  
approximately: 36 grams; lengths: 6 1/4  
and 6 1/2in.*

**\$1,000 - 1,500**

89  
**A GOLD CHARM BRACELET**  
*Suspending thirteen charms; mounted in 14k  
and 18k gold; gross weight approximately  
134 grams; length: 7in.*

**\$2,200 - 2,800**

90  
**A CITRINE RING TOGETHER WITH A  
GARNET AND DIAMOND RING**  
*one centering an oval shaped brilliant-  
cut citrine weighing approximately 4.25  
cts. and an oval shaped garnet weighing  
approximately 2.60cts; mounted in 14k gold;  
sizes: 8 1/2 to 9*

**\$800 - 1,000**  
**To be sold without reserve**



91



93



92

91  
**A PAIR OF PEARL, DIAMOND AND EMERALD BANGLES**  
*mounted in 14k gold; gross weight approximately: 31 grams; length: 6 1/4in.*

**\$1,000 - 1,500**

92  
**A PAIR OF GOLD BROOCHES,**  
*mounted in 14k gold; gross weight approximately: 25 grams; bird brooch dimensions: 2 1/4 x 1 1/4in.; nest brooch dimensions: 1 1/2 x 1 1/2in. ; bird brooch signed: Ruser*

**\$1,200 - 1,500**

93  
**A DIAMOND RING**  
*centering a pear shaped brilliant-cut diamond weighing 1.67cts and measuring 9.66 x 6.93 x 4.15mm; mounted in platinum; size: 6 1/4*

**\$5,500 - 6,500**

*Accompanied by GIA report #2203730317, dated November 13, 2019, stating the Diamond as: D color, VS1 clarity.*



94

94  
**A MOONSTONE RING, VAN CLEEF & ARPELS**  
centering an oval cabochon-cut moonstone measuring approximately 7.08 x 5.40 x 3.74mm; mounted in 18k gold; size: 8; signed: VCA; numbered: B5520 P7

**\$800 - 1,000**  
To be sold without reserve



95

95<sup>Y</sup>  
**A PAIR OF CORAL EAR CLIPS**  
centering two oval-shaped cabochon-cut corals measuring approximately 23.76 x 15.06 x 7.98mm; mounted in 18k gold; dimensions: 1 x 3/4in.

**\$1,200 - 1,500**

Please note this item cannot be shipped internationally as it may contain endangered materials.



96

96  
**A COLLECTION OF MABÉ PEARL AND CULTURED PEARL JEWELRY, FRENCH**  
mounted in 18k bi-color gold; estimated total diamond weight: 2.80cts; gross weight approximately: 126 grams; necklace length: 13in.; ear clip dimensions: 7/8 x 7/8in.; stamped with French marks; ear clips numbered: 30212; necklace numbered: 739800

**\$1,200 - 1,800**  
To be sold without reserve







98



99



97



101



100

97

**A DIAMOND BOMBE RING**

*mounted in 18k rose gold; estimated total diamond weight: 3.40cts; size: 5 3/4*

**\$1,800 - 2,200**

98

**AN ARTICULATED DIAMOND FLOWER BROOCH**

*mounted in 18k gold; dimensions: 2 1/2 x 1 1/2in.*

**\$1,500 - 2,000**

99

**A POODLE PENDANT, RUSER**

*mounted in 14k gold; dimensions: 1 3/4 x 1 1/4in.; signed: Ruser*

**\$600 - 800**

100

**A POODLE BROOCH**

*mounted in 14k gold; dimensions: 1 1/4 x 1 1/2in.*

**\$1,000 - 1,500**

101

**A PAIR OF DIAMOND EAR CLIPS**

*mounted in 10k gold; estimated total diamond weight: 3.65cts; dimensions: 1 1/4in.*

**\$1,800 - 2,200**

**PROPERTY OF AN ARIZONA LADY**

# Property from Ronald & Gloria Savin, Rancho Mirage, California

Lots 102-110



103



102



104



106



105



102

## **AN EMERALD AND DIAMOND RING**

centering a pear brilliant-cut emerald measuring approximately 14.46 x 11.32 x 7.43mm; mounted in 14k gold; estimated total diamond weight: 2.25cts; size: 6

**\$2,200 - 3,200**

103

## **A LADY'S DIAMOND AND 18K GOLD WRISTWATCH, CHOPARD**

quartz movement; setting pin, case and dial signed estimated total diamond weight: 2.85cts; gross weight approximately: 43 grams; case diameter: 26mm; length: 6in.

**\$2,500 - 3,500**

104

## **A DIAMOND RING**

mounted in 18k gold; estimated total diamond weight: 4.50cts; size: 6 3/4

**\$1,800 - 2,200**

105

## **A PAIR OF GEMSTONE RINGS**

comprising a lapis lazuli and diamond ring, together with a jade and amethyst ring; both mounted in 14k gold; estimated gross weight: 27 grams; lapis lazuli ring size: 10, jade ring size: 7 3/4

**\$1,000 - 1,500**

**To be sold without reserve**

106

## **A LADY'S DIAMOND, RUBY, AND 18K GOLD WRISTWATCH**

automatic movement; case, dial, and movement signed, case stamped Ref. 69068, serial number 8885426 estimated total diamond weight: 0.85cts; gross weight approximately: 71 grams; diameter: 25mm; length: 5 1/2 in.

**\$7,000 - 9,000**



107

107

**A DIAMOND BALLERINA RING PENDANT**

centering an oval brilliant-cut diamond weighing approximately 1.00ct; mounted in platinum; estimated remaining diamond weight: 1.45cts; size: 3 1/2

**\$2,000 - 3,000**

108

**A LADY'S DIAMOND AND PLATINUM BRACELET WATCH, HAMILTON**

mechanical movement dial and movement signed case dimensions: 14 x 21mm; length: 6 in.

**\$1,000 - 1,500**

108

109

**A DIAMOND BRACELET**

centering three old mine-cut diamonds weighing approximately 2.70cts; mounted in platinum and completed with a 10k white gold safety chain; estimated remaining diamond weight: 8.15cts; length: 6 1/2in.

**\$1,800 - 2,200**

109

110

110

**A PAIR OF DIAMOND EAR PENDANTS**

centering two old mine-cut diamonds measuring approximately 6.35 x 6.35 x 3.95mm; mounted in 14k white gold; estimated remaining diamond weight: 3.00cts; ear pendant length: 1 3/4in.

**\$2,500 - 3,500**



111



114



113



112

**111  
A PAIR OF DIAMOND AND RUBY EAR  
PENDANTS**

centering two round brilliant-cut diamonds weighing approximately 1.65cts; *mounted in platinum; dimensions: 1 1/4 x 1/2in.*

**\$1,800 - 2,200**

**112  
AN EMERALD AND DIAMOND BAR  
BROOCH, FRENCH**

centering an hexagonal-cut emerald measuring approximately 6.08 x 6.02 x 3.22mm; *mounted in platinum; estimated total diamond weight: 2.60cts; dimensions: 3 1/4 x 1/4in.; French marks; with fitted box*

**\$3,000 - 5,000**

**113  
A SAPPHIRE AND DIAMOND RING**

centering a square-shaped sugar loaf cabochan sapphire measuring approximately 8.98 x 8.25 x 6.41mm; *mounted in platinum; size: 7 1/4*

**\$1,000 - 1,500  
To be sold without reserve**

**114  
A DIAMOND AND RUBY RING**

centering a round brilliant-cut diamond weighing approximately 1.00ct; *mounted in platinum; size: 6 3/4*

**\$1,000 - 1,500**





115



118



116



117

**PROPERTY OF A PALM SPRINGS COLLECTOR**

**115  
A SAPPHIRE AND DIAMOND BALLERINA RING**

centering an oval-shaped brilliant-cut sapphire weighing approximately 4.25cts; mounted in platinum; estimated total diamond weight: 1.60cts; size: 4 3/4

**\$5,000 - 8,000**

Accompanied by GIA report #2205730315, dated November 14, 2018, stating the Sapphire as: Natural Corundum, no indications of heating, Burmese in origin, "Royal Blue" color.

**116  
A DIAMOND BOW BROOCH**

mounted in platinum; estimated total diamond weight: 9.60cts; dimensions: 2 3/4 x 1 1/8in.

**\$6,000 - 8,000**

**117  
A PAIR OF DIAMOND EAR CLIPS**

mounted in 18k white gold; estimated total diamond weight: 3.95cts; dimensions: 1 x 3/4in.

**\$2,000 - 3,000**

**118  
AN AQUAMARINE AND DIAMOND BROOCH, CARTIER, LONDON, CIRCA 1930**

centering four rectangular step-cut aquamarines measuring approximately 6.52 x 5.83 to 10.95 x 5.57mm; mounted in platinum; estimated total diamond weight: 1.00ct; dimensions: 1 5/8 x 5/8in; with partial signature

**\$4,000 - 6,000**



119



121



122

**PROPERTY OF A LOS ANGELES LADY**

119

**A DIAMOND RING**

centering a square modified brilliant-cut diamond weighing: 3.03cts; *mounted in rhodium plated 14k gold; estimated remaining diamond weight: 1.05cts; size: 6*

**\$15,000 - 25,000**

Accompanied by GIA report #6194900160, dated December 04, 2018, stating the diamond as: I color, VS2 clarity.

120 No lot

121

**A DIAMOND CLUSTER RING**

centering on oval old mine-cut diamond weighing approximately 0.75ct; *mounted in yellow plated 14k white gold; estimated remaining diamond weight: 1.05cts; size: 9*

**\$1,500 - 2,000**

122

**A PAIR OF DIAMOND STUD EARRINGS**

centering two round brilliant-cut diamonds weighing approximately 2.20cts; *mounted in 18k white gold; dimensions: 3/8 x 3/8in.*

**\$1,500 - 2,000**





123

123  
**A PAIR OF DIAMOND EAR PENDANTS**  
*mounted in 18k white gold; estimated total diamond weight: 3.95cts; dimensions: 1 1/2 x 1in.*

**\$1,500 - 2,000**



124

124  
**A DIAMOND NECKLACE**  
*mounted in 18k white gold; estimated total diamond weight: 7.40cts; gross weight approximately: 44 grams; length: 16 1/2in.*

**\$3,000 - 5,000**



125

125  
**A DIAMOND RING, TOGETHER WITH A PAIR OF DIAMOND EAR PENDANTS**  
*mounted in palladium; estimated total diamond weight: 2.25cts; ring size: 6 3/4; ear pendant drop: 1 1/8in.; Ring deficient one diamond*

**\$1,000 - 1,500**







126



127



130



128



129

126  
**AN AQUAMARINE AND DIAMOND RING**  
centering an oval-shaped brilliant-cut aquamarine measuring approximately 29.99 x 21.30 x 14.06mm; mounted in 18k white gold; estimated total diamond weight: 1.65cts; size: 7 1/2

**\$2,000 - 3,000**

127  
**A DIAMOND BRACELET**  
mounted in 18k white gold; estimated total diamond weight: 1.25cts; length: 7 3/4in.

**\$800 - 1,000**

128  
**A PAIR OF DIAMOND EARCLIPS, FRENCH**  
of swirl design, centrally set with a round brilliant-cut diamonds, weighing approximately 0.67 and 0.63 carat, surrounded by baguette and round brilliant-cut diamonds; with French assay marks; estimated remaining diamond weight: 9.50 carats; mounted in platinum and 18k gold; length: 1 1/4in.

**\$4,000 - 6,000**

**PROPERTY FROM A LONG ISLAND, NEW YORK ESTATE**

129  
**A DIAMOND BROOCH, VAN CLIEF**  
mounted in platinum; estimated total diamond weight: 5.50cts; dimensions: 1 7/8 x 1 3/5in.; signed: Van Clief

**\$1,800 - 2,200**

130  
**A DIAMOND CLUSTER RING**  
mounted in 14k white gold; estimated total diamond weight: 4.00cts; size: 6

**\$2,000 - 3,000**



132



131



133

131<sup>Y</sup>

**A CORAL AND DIAMOND RING AND EAR PENDANT SET**

centering oval shaped cabochon-cut coral; mounted in palladium; estimated total diamond weight: 2.70cts; ring size: 5 1/4; ear pendant dimensions: 1 3/4 x 3/4in.

**\$1,800 - 2,200**

Please note this item cannot be shipped internationally as it may contain endangered materials.

132

**A DIAMOND BROOCH**

centering an old European-cut diamond weighing approximately 1.70cts; mounted in platinum; estimated remaining diamond weight: 2.85cts; dimensions: 2 3/4 x 2 3/4in.

**\$4,000 - 6,000**

133

**AN OPEN LINK DIAMOND NECKLACE**

mounted in 18k white gold; estimated total diamond weight: 14.75cts; length: 15 1/2in.

**\$6,000 - 8,000**



134



135



136



137

134  
**A PAIR OF BLUE TOPAZ AND PINK  
SAPPHIRE EAR CLIPS, PAOLO COSTAGLI**  
*mounted in 18k white gold; dimensions: 7/8  
x 1/4in.; signed: Costagli; with signed pouch*  
**\$1,600 - 2,000**

**PROPERTY OF A SAN DIEGO,  
CALIFORNIA COLLECTOR**

135  
**AN AQUAMARINE AND DIAMOND RING**  
*centering a rectangular step-cut aquamarine,  
measuring approximately 14.63 x 13.10  
x 9.19mm; mounted in 14k white gold;  
estimated total diamond weight: 1.10cts;  
size: 7 1/4*

**\$1,500 - 2,000**

**PROPERTY OF AN ARIZONA LADY**

136  
**A GRADUATED DIAMOND RIVIÈRE  
NECKLACE**  
*mounted in 14k white gold; estimated total  
diamond weight: 12.00cts; gross weight  
approximately: 40 grams; length: 16 1/4in.*

**\$5,000 - 7,000**

137  
**A PAIR OF DIAMOND AND TURQUOISE  
PENDANT EARRINGS**  
*mounted in 18k white gold; ear pendant  
drop: 3 1/8in.*

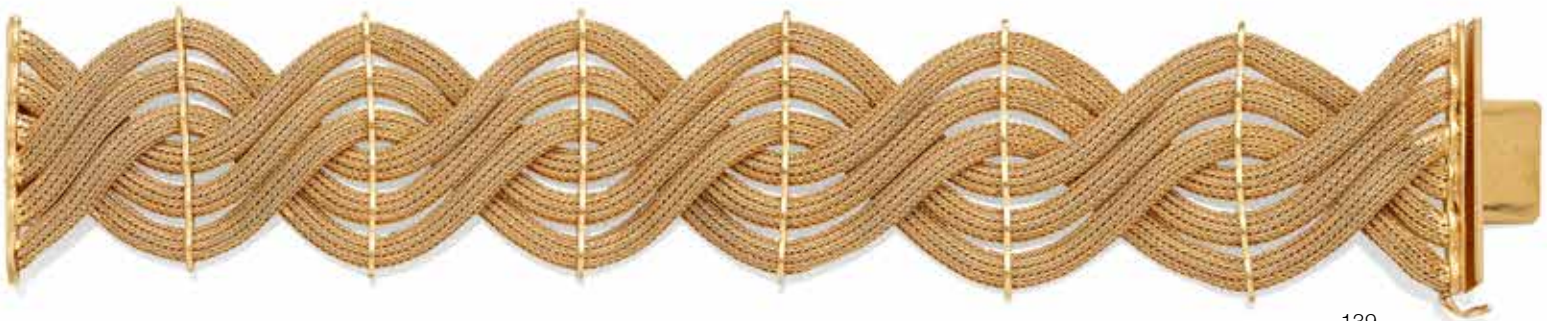
**\$1,200 - 1,500**



138



140



139

138  
**A PAIR OF TURQUOISE, PERIDOT AND CULTURED PEARL CONVERTIBLE EAR CLIPS**  
*mounted in 18k gold; gross weight approximately: 42 grams; ear pendant drop: 3in.*

**\$1,800 - 2,200**

139  
**A WOVEN GOLD BRACELET**  
*mounted in 18k gold; weighing approximately: 55 grams; dimensions: 7 1/2 x 1 3/5in.*  
**\$1,500 - 2,000**

140  
**A WOVEN GOLD POWDER COMPACT, VAN CLEEF & ARPELS**  
*mounted in 18k gold; gross weight approximately: 102 grams; dimensions: 3 1/4 x 3 1/4in.; signed: Van Cleef & Arpels; numbered: 83603; includes protective sleeve*

**\$2,500 - 3,500**





141



142

141

**A DIAMOND BROOCH, CLERC, FRENCH, CIRCA 1945**

designed as a bow, pierced and set with old mine, round brilliant and baguette-cut diamonds, the largest weighing approximately 1.20 carats; signed *Clerc Paris*, with maker's mark and French assay marks; estimated total diamond weight: 6.05 cts; mounted in platinum and 18k gold; length: 2 3/4in.

**\$5,000 - 7,000**

142

**A PERIDOT AND DIAMOND NECKLACE**

centering twenty-six square step-cut peridot, measuring approximately from 7.80 x 7.80 x 4.52mm to 13.71 x 9.84 x 5.55mm; mounted in 18k gold; estimated total diamond weight: 4.65cts; gross weight approximately: 37 grams; length: 16 1/2in.

**\$12,500 - 14,500**



143



144



146

145

143<sup>Y</sup>  
**A CARVED CORAL AND DIAMOND RING**  
 centering a carved square-shaped cabochon-cut coral measuring approximately 15.05 x 15.30 x 8.53mm; mounted in 18k bi-color gold; estimated total diamond weight: 2.15cts; size: 5 1/2

**\$2,000 - 3,000**

Please note this item cannot be shipped internationally as it may contain endangered materials.

144  
**A DEMANTOID GARNET AND DIAMOND TURTLE PIN**  
 mounted in 14k gold and platinum; dimensions: 1 5/16 x 3/4in.

**\$1,900 - 2,200**

**PROPERTY OF AN ARIZONA LADY**  
 145  
**A GROUP OF THREE DIAMOND STATION CHAINS**  
 mounted in 14k gold; estimated total diamond weight: 2.25cts; lengths: 16 1/2 to 18in.

**\$1,200 - 1,500**



146  
**A PAIR OF CRYSTAL, HARD STONE AND DIAMOND EARRINGS**  
*mounted in 18k gold; gross weight approximately: 34 grams; dimensions: 2 1/2 x 1in.*

\$1,200 - 1,500

147  
**A GOLD CHARM BRACELET WITH A COLLECTION OF EIGHT LOOSE CHARMS AND A GOLD KEY**  
*mounted in sterling, 14k and 18k gold; gross weight approximately: 107 grams; bracelet length: 7 1/2in.*

\$2,000 - 3,000

148  
**A PAIR OF DIAMOND AND AGATE EARRINGS**  
*mounted in 18k bi-color gold; dimensions: 1 1/4 x 1 1/4in.*

\$1,200 - 1,500



149



153



151



150



152

**149  
A DIAMOND FLORAL BROOCH, TIFFANY & CO.**

*mounted in 18k gold; dimensions: 1 3/4 x 1 1/2in.; signed: Tiffany & Co.*

**\$1,500 - 1,800**

**150  
A CULTURED PEARL AND DIAMOND HINGED BANGLE**

*centering five cultured pearls, measuring approximately from 10.58 x 10.97 to 11.65 x 11.77mm; mounted in 14k gold; estimated total diamond weight: 1.00ct; gross weight approximately: 59 grams; length: 6 1/2in.*

**\$2,500 - 3,500**

**151  
A CITRINE AND DIAMOND RING**

*centering a rectangular cushion-cut citrine measuring approximately 16.64 x 15.32 x 10.08mm; mounted in 14k gold; estimated total diamond weight: 2.10cts; size: 6*

**\$2,000 - 3,000**

**152  
A PAIR OF CITRINE AND DIAMOND EAR CLIPS**

*centering two curved triangular-shaped citrines measuring approximately 10.15 x 10.08 x 5.51mm; mounted in 18k gold and platinum; dimensions: 3/4 x 3/4in.*

**\$1,200 - 1,500**

**153  
A DIAMOND RING**

*centering a round brilliant-cut diamond weighing 2.03cts; mounted in 14k white gold, partially plated in yellow gold; size: 5 1/2*

**\$4,500 - 5,500**

*Accompanied by GIA report #7122183078, dated May 27, 2011, stating the Diamond as: Natural Diamond, L color and VVS2 in clarity.*

**154  
A DIAMOND BANGLE, ITALIAN**  
*mounted in bi-color 18k gold; gross weight approximately: 40 grams; length 7 1/4in.*

**\$1,500 - 2,000**

**155  
A FLUORITE AND TOPAZ TUMBLED BEAD NECKLACE WITH AMBER CLASP**  
*strung with 18k gold beads; gross weight approximately 132 grams; length: 21in.*

**\$1,000 - 1,500**

**156  
A CULTURED PEARL RING, TOGETHER WITH DIAMOND FREE FORM EARRING JACKETS**  
*ring mounted in 18k gold, earring jackets mounted in 14k bi-color gold; gross weight approximately: 32 grams; ring size: 7; earring jacket dimensions: 1 1/8 x 1in.*

**\$1,000 - 2,000**





154



155



156





157



158



161



159



160

157

**A COLLECTION OF SIX TOURMALINE STATION NECKLACES**

each set with an array of graduated rose-cut tourmalines, measuring approximately from 7.37 x 5.84 x 2.11 to 19.56 x 12.74 x 2.93mm; mounted in blackened silver; gross weight approximately: 184 grams; length: 35in.

**\$1,000 - 1,500**

158

**A PAIR OF DIAMOND EAR PENDANTS**

mounted in silver and 18k gold; estimated total diamond weight: 2.45cts; dimensions: 1 3/4 x 1 1/8in.

**\$800 - 1,200**  
To be sold without reserve

159

**A PAIR OF DIAMOND HINGED BANGLES**

mounted in blackened silver and 14k gold; gross weight approximately: 44 grams; length: 6 1/2in.

**\$800 - 1,200**  
To be sold without reserve

160

**A PAIR OF RUBY EAR PENDANTS**

mounted in blackened silver; dimensions: 2 1/4 x 1 1/8in.

**\$800 - 1,200**  
To be sold without reserve

161

**A SAPPHIRE HINGED BANGLE**

mounted in blackened silver; gross weight approximately: 53 grams; length: 7 1/8in.

**\$1,000 - 1,500**  
To be sold without reserve



163



164



162



165



166

162

**A DIAMOND TOI ET MOI RING**

*mounted in 18k white gold; estimated total diamond weight: 2.40cts; size: 6 1/4*

**\$8,000 - 10,000**

163

**A PAIR OF DIAMOND AND CULTURED PEARL EAR PENDANTS**

*suspending two cultured pearls measuring approximately 12.10 x 12.06 x 13.18mm; mounted in platinum; estimated total diamond weight: 2.30cts; ear pendant drop: 1 1/2in.*

**\$1,500 - 2,000**

164

**A RUBY AND DIAMOND RING**

*centering an oval shaped brilliant-cut ruby weighing 2.13cts; mounted in 18k white gold; estimated total diamond weight: 1.00cts; size: 7*

**\$6,000 - 10,000**

*Accompanied by GIA report #1339036096, dated June 12, 2019, stating the Ruby as: natural corundum, no indications of heating. Burmese in origin.*

165

**A DIAMOND RIVIÈRE NECKLACE, DEBEERS**

*mounted in 18k white gold; estimated total diamond weight: 8.25cts; length: 15 1/2in.; signed: DeBeers; numbered: B58919*

**\$6,000 - 8,000**

166

**A PAIR OF RUBELLITE AND DIAMOND EAR PENDANTS**

*centering two marquise-cut rubellite measuring approximately 8.46 x 6.05 x 3.57mm; mounted in platinum; estimated total diamond weight: 2.75cts; ear pendant drop: 1 7/8in.; deficient one diamond*

**\$3,000 - 5,000**





168



169



167



170



171

167

**A DIAMOND FRINGE RING, DIOR**

centering seven oval brilliant-cut diamonds weighing a total of approximately 3.45cts; mounted in 18k white gold; estimated remaining diamond weight: 1.10cts; size: 6; signed: Dior; numbered: H2870

**\$2,500 - 3,500**

168

**A PAIR OF DIAMOND CLUSTER EARRINGS**

centering six marquise-shaped brilliant-cut diamonds weighing a total of approximately 3.90cts; mounted in 18k white gold; estimated remaining diamond weight: 1.90cts; dimensions: 3/4 x 3/4in.

**\$2,200 - 2,800**

169

**A DIAMOND RING**

centering an old European-cut diamond weighing approximately: 1.30cts; mounted in platinum; size: 6

**\$4,000 - 6,000**

170

**A PAIR OF DIAMOND AND RUBY EAR PENDANTS**

centering two round brilliant-cut diamonds weighing a total of approximately 1.05cts; mounted in platinum; ear pendant drop: 1 1/8in.

**\$1,200 - 1,500**

171

**A RUBY AND DIAMOND TASSEL PENDANT**

mounted in 18k white gold; estimated total diamond weight: 1.40cts; gross weight approximately: 46 grams; length: 30in.

**\$4,000 - 6,000**



172



173



174

172  
**A DIAMOND AND SAPPHIRE BROOCH,  
 CIRCA 1920**

centering an old european-cut diamond weighing approximately 0.90ct; *mounted in platinum; dimensions: 2 5/8 x 1/2in.*

**\$1,800 - 2,200**

173  
**A CULTURED PEARL, SAPPHIRE AND  
 DIAMOND BRACELET**

centering an oval shaped brilliant-cut sapphire measuring approximately 6.99 x 5.78 x 3.85mm; *mounted in platinum; estimated total diamond weight: 2.65cts; gross weight approximately: 61 grams; length: 6 1/4in.*

**\$1,200 - 1,500**

**PROPERTY OF THE MULHOLLAND  
 FAMILY**

174  
**A DIAMOND BROOCH**

*mounted in platinum; estimated total diamond weight: 1.40cts; dimensions: 1 3/4 x 1in.*

**\$1,000 - 1,200**  
**To be sold without reserve**



175



177



176



175

**A DIAMOND RING AND TWO BROOCHES**

*mounted in platinum and 18k white gold; estimated total diamond weight: 1.85cts; ring size: 8 1/2; enamel brooch dimensions: 1 3/4 x 1 1/8in.; diamond brooch dimensions: 1 1/4 x 7/8in.*

**\$2,000 - 3,000**

176

**A PAIR OF RUBY AND DIAMOND EARRINGS**

*centering two oval-shaped brilliant-cut rubies measuring 11.76 x 9.10 x 4.65mm and 11.39 x 8.45 x 3.70mm; mounted in platinum; estimated total diamond weight: 5.80cts; dimensions: 1 3/4 x 3/4in.*

**\$9,000 - 12,000**

Accompanied by GIA report #2205730314, dated November 14, 2019, stating the rubies as: Burmese origin, no indications of heating.

177

**A JADE AND DIAMOND BROOCH AND EAR PENDANTS**

*mounted in 14k white gold; estimated total diamond weight: 7.85cts; gross weight approximately: 27 grams; brooch dimensions: 2 1/8 x 1 1/4in.*

**\$3,000 - 5,000**

Accompanied by Mason Kay reports #191028-1828 and 191028-401, dated October 28, 2019, stating: Natural Jadeite Jade-No Dye or Impregnation detected-'A' Jade.



178  
**A DIAMOND AND EMERALD NECKLACE  
AND BRACELET SET**

*mounted in 18k gold; estimated total  
diamond weight: 26.85cts; gross weight  
approximately: 222 grams; necklace length:  
19in.; bracelet length: 7 3/4in.*

**\$30,000 - 40,000**





179



181



180



182

**PROPERTY OF A THOUSAND OAKS, CA COLLECTOR**

**179  
AN EMERALD, DIAMOND, BI-COLOR GOLD AND PLATINUM RING**

oval cabochon-cut emerald measuring approximately: 9.02 x 6.30 x 4.90mm; estimated total diamond weight: 1.00ct; size: 3 3/4

**\$1,500 - 2,000**  
To be sold without reserve

**180  
A PAIR OF ENAMEL CUFFLINKS, DAVID WEBB**

mounted in 18k gold; dimensions: 1 x 5/8in.; signed David Webb

**\$1,500 - 2,200**

**181  
AN ELF BROOCH AND FOX CUFFLINKS**

both mounted in 18k gold; brooch dimensions: 2 1/4 x 3/4in

**\$1,000 - 1,500**

**182  
A CHRISTMAS CHARM BANGLE BRACELET**

comprising of eighteen charms, consisting of diamonds, emeralds, sapphires and rubies; mounted in 18k gold; estimated total diamond weight: 4.40cts; gross weight approximately 129 grams; length: 6 3/4in.

**\$7,000 - 9,000**

# Session Two

Lots 183-368

2pm







# Property from the Estate of Joan Z. Steinbrenner

Lots 183-194



Joan Steinbrenner, born Elizabeth Joan (pronounced Jo-ann) Zieg, on August 25, 1935, in Mount Vernon, Ohio, was an American philanthropist, vice-chairwoman of the Yankees, and the wife of George Steinbrenner, the man who built the Yankees into the powerhouse we know it to be today. George's tumultuous, yet hugely successful tenure as the Yankees principal owner and chairman from the day he assumed control in 1973 to his passing in 2010, earned him the moniker of "the Boss" in his honorary city of New York. Joan, in her own right, was his counterpart and companion in life and within their community.

Mrs. Steinbrenner participated in many community projects and supported numerous philanthropic organizations over the years. In her native Ohio, she worked with the Cleveland Orchestra and was deeply involved with the Lake Erie Nature & Science Center. In Florida, she was named State Chairperson for the Florida Special Olympics in 1981 and 1982, and at various times sat on the boards of the National Society to Prevent Blindness, the Children's Home, Inc., the St. Joseph's Hospital Foundation and the Florida Orchestra.

A graduate of Upper Arlington High School in Columbus, Ohio, and Ohio State University, Mrs. Steinbrenner earned a degree in dental hygiene. She met George while he was undertaking his postgraduate studies at Ohio State. They married in 1956. In 1973, Mr. Steinbrenner led a group that purchased the Yankees. Brusque and tempestuous, often sparring with managers and players, he put a formidable stamp on the team as it won eleven pennants and seven World Series championships. In 2019, Forbes estimated the team's worth at \$4.6 billion, making it the most valuable franchise in baseball – its local revenue totaling more than the bottom six teams combined.

Bonhams is proud to offer a selection of bold, sophisticated and timeless jewelry from the Estate of Joan Z. Steinbrenner, whose elegance and grace lives on in her legacy of good works and her family's unwavering dedication to baseball, America's pastime.





183

183

**A PAIR OF DIAMOND EAR CLIPS**

*mounted in 14k gold; estimated total diamond weight: 1.15cts;  
dimensions: 1 x 3/4in.*

**\$1,000 - 1,500**



184

184

**A FANCY LINK BRACELET AND NECKLACE SET TOGETHER  
WITH A DIAMOND PENDANT AND BYPASS RING**

*mounted in 14k gold and platinum; estimated total diamond weight:  
1.65cts; gross weight approximately: 111 grams; necklace length:  
18in.; bracelet length: 8in.*

**\$1,500 - 2,500**

Property from the Estate  
of Joan Z. Steinbrenner

Lots 183-194



185



186





185

**A COLLECTION OF SEVEN GOLD NECKLACES**

*mounted in 14k and 18k bi-color gold; gross weight approximately: 298 grams; lengths: from 18in. to 32in.*

**\$3,000 - 5,000**

186

**A LADIES DIAMOND BELUGA WATCH TOGETHER WITH A DIAMOND AND ONYX WATCH, EBEL, ARTE D' ORA**

*each mounted in 18k gold; gross weight approximately: 126 grams; Ebel case diameter: 28mm; Arte d' Ora case diameter: 30mm; bracelet lengths: 5 1/2in.; Ebel Beluga comes with additional links and papers*

**\$1,800 - 2,500**

187

**A DIAMOND FESTOON NECKLACE**

*mounted in 14k white gold; estimated total diamond weight: 7.95cts; gross weight approximately: 47 grams; length: 15 1/2in.*

**\$2,500 - 3,500**

188

**A PEARL AND DIAMOND NECKLACE TOGETHER WITH A PAIR OF PEARL AND DIAMOND EAR CLIPS**

*necklace centering a mabé pearl measuring approximately 20.32 x 20.47 x 12.93mm; each mounted in bi-color 18k gold; estimated total diamond weight: 5.40cts; necklace length: 17 1/2in.; ear clip dimensions: 1 1/4 x 1 7/8in.*

**\$1,500 - 2,500**

Property from the Estate  
of Joan Z. Steinbrenner

Lots 183-194







191

189  
**A BAROQUE CULTURED PEARL AND  
 DIAMOND DEMI-PARURE, PAOLO  
 COSTAGLI**

*mounted in 18k white gold; estimated total  
 diamond weight: 15.40cts; necklace length:  
 17 1/2in.; bracelet length: 7 1/2in.; signed:  
 Costagli*

**\$3,000 - 5,000**

190  
**A PAIR OF RUBY AND DIAMOND EAR  
 CLIPS**

*centering six oval shaped brilliant-cut rubies  
 measuring approximately 9.93 x 7.55 x 4.76  
 to 10.03 x 8.06 x 2.98mm; mounted in 18k  
 white gold; estimated total diamond weight:  
 3.25cts; dimensions: 1 1/8 x 1/2in.*

**\$2,500 - 4,500**

191  
**A DIAMOND AND RUBY NECKLACE**

*centering eighteen oval-shaped brilliant-cut  
 rubies measuring from 5.77 x 5.84 to 11.72 x  
 9.01 x 4.97mm; mounted in 18k white gold;  
 estimated total diamond weight: 41.65cts;  
 length: 15 1/2in.*

**\$10,000 - 15,000**

# Property from the Estate of Joan Z. Steinbrenner

Lots 183-194



192



193



194

192

## A LAPIS LAZULI AND DIAMOND PIN

centering an oval-shaped cabochon-cut lapis lazuli, measuring approximately 35.45 x 16.02 x 7.26mm; mounted in 14k bi-color gold; estimated total diamond weight: 3.20cts; dimensions: 1 3/4 x 7/8in.

\$700 - 1,000

193

## A SAPPHIRE AND DIAMOND BALLERINA RING

centering an oval-shaped brilliant-cut sapphire, measuring approximately 14.90 x 11.95 x 6.55mm; mounted in 14k gold; estimated total diamond weight: 3.30cts; size: 5

\$3,000 - 5,000

194

## A YELLOW GOLD LINK BRACELET AND NECKLACE, GROUPED WITH A YELLOW GOLD FANCY TWIST LINK BRACELET AND NECKLACE

mounted in 14k gold; gross weight approximately: 142 grams; bracelet lengths: 7 to 8in.; necklace lengths: 17 to 30in.

\$1,500 - 2,000







196



199



197



195



198

195  
**A GROUP OF THREE DIAMOND AND SAPPHIRE BANGLES**  
*mounted in blackened silver and 14k gold; estimated total diamond weight: 1.10cts; gross weight approximately: 57 grams; lengths: 6 1/8 to 6 1/4in.*

**\$800 - 1,200**  
To be sold without reserve

196  
**A BLUE TOPAZ RING, CARTIER**  
*centering an oval brilliant-cut topaz, measuring approximately 10.07 x 8.03 x 5.70mm; mounted in sterling silver and 18k gold; size: 6; signed: Cartier*

**\$800 - 1,000**  
To be sold without reserve

197  
**A PAIR OF BLUE TOPAZ AND LAPIS LAZULI EAR PENDANTS, PAOLO COSTAGLI**  
*mounted in 18k white gold; dimensions: 1 1/2 x 1/2in.; with signed pouch*

**\$1,000 - 1,500**

198  
**A GOLD AND SILVER CUFF BRACELET, CARTIER**  
*mounted in sterling silver and 18k gold; gross weight approximately: 49 grams; length: 5 3/4in.; signed: Cartier*

**\$1,200 - 1,500**  
To be sold without reserve

199  
**A SAPPHIRE AND DIAMOND SNAKE RING**  
*mounted in 18k white gold; size: 7*

**\$1,500 - 2,000**





200

**200  
AN DIAMOND 18K WHITE GOLD 'HAPPY SPORT' WRISTWATCH, CHOPARD**

quartz movement, case and dial signed; estimated total diamond weight: 4.20cts; gross weight approximately: 91 grams; case width: 35mm

**\$6,000 - 8,000**



201

**PROPERTY FROM A NEW YORK COLLECTION**

**201  
A COLORED DIAMOND BEAD NECKLACE**

mounted in 18k white gold; estimated white diamond total weight: 9.60cts; gross weight approximately: 31 grams; length: 50in. (colored diamonds untested for origin of color)

**\$2,000 - 3,000**

202



**202  
A PAIR OF WHITE SAPPHIRE, DIAMOND AND COLORED DIAMOND EAR PENDANTS, PAOLO COSTAGLI**

designed as a pair of removable ebony wood drops, set with diamonds, the tops set with round white sapphires; mounted in 18k white gold; dimensions: 2 1/8 x 3/4in.; with signed pouch (colored diamonds untested for origin of color)

**\$1,800 - 2,200**



205



204



206



203

203

**A DIAMOND BRACELET**

*mounted in 18k white gold; estimated total diamond weight: 3.30cts; gross weight approximately: 30 grams; length: 7in.; one diamond deficient*

**\$2,000 - 3,000**

204

**A LADY'S DIAMOND AND STAINLESS STEEL WRISTWATCH, GUCCI**

*quartz movement; case and dial signed; estimated total diamond weight: 2.75cts; case width: 23 mm; length: 6 in.*

**\$1,500 - 2,000**

205

**A DIAMOND AND SAPPHIRE BOMBE RING**

*mounted in 14k white gold; estimated total diamond weight: 2.70cts; size: 6 1/4*

**\$1,800 - 2,200**

206

**A DIAMOND MULTI STRAND NECKLACE, ROBERT LEGNAZZI**

*mounted in 18k white gold; estimated total diamond weight: 1.00ct; gross weight approximately: 60 grams; length: 16 3/4in.; signed: Legnazzi; accompanied with signed pouch*

**\$2,000 - 3,000**



207



208



209



210



211

207  
**A LAPIS LAZULI, TURQUOISE AND DIAMOND RING**  
centering sugarloaf cabochon lapis lazuli, measuring approximately 19.23 x 15.00 x 11.60mm; mounted in platinum; size: 7 1/2

**\$4,000 - 6,000**

208  
**A DIAMOND LINE BRACELET**  
comprised of twenty-five square-shaped step-cut diamonds, weighing a total of approximately 7.30cts; mounted in 18k white gold; estimated remaining diamond weight: 3.15cts; gross weight approximately: 25 grams; length: 7 1/4in.

**\$6,000 - 8,000**

209  
**A PAIR OF DIAMOND HOOP EARRINGS**  
mounted in 18k white gold; estimated total diamond weight: 3.20cts; dimensions: 1 1/2 x 1 1/2in.

**\$2,000 - 3,000**

210  
**AN OPAL AND DIAMOND RING**  
centering an oval-shaped cabochon black opal doublet, measuring approximately 21.21 x 17.23 x 9.01mm; mounted in 18k white gold; estimated total diamond weight: 1.60cts; size: 7

**\$1,800 - 2,200**

211  
**A DIAMOND BANGLE BRACELET**  
centering two square step-cut diamonds weighing approximately 1.00ct; mounted in 18k white gold; length: 6 1/2in.

**\$1,800 - 2,200**



212

**212  
A COLORED DIAMOND AND DIAMOND  
HALO RING**

centering a round brilliant-cut diamond weighing approximately 1.20cts; mounted in 18k bi-color gold; size: 7 1/4; signed: Tremonti (colored diamonds untested for origin of color)

**\$2,500 - 3,500**



213

**213  
A DIAMOND ETERNITY BAND**

set throughout with marquise and round brilliant-cut diamonds; estimated total diamond weight: 3.50cts; size: 5 3/4

**\$1,500 - 2,000**



215

**PROPERTY OF AN ARIZONA LADY**

**214  
A DIAMOND LINK NECKLACE**

mounted in 18k white gold; estimated total diamond weight: 1.50cts; gross weight approximately: 41 grams; length: 17 1/2in.

**\$2,000 - 3,000**

**215  
A PAIR OF DIAMOND AND ROSEWOOD  
DROP EARRINGS, PAOLO COSTAGLI**

mounted in 18k white gold; estimated total diamond weight: 1.10cts; with signed pouch

**\$1,000 - 1,500**



214





**PROPERTY OF AN ARIZONA LADY**

216  
**A TURQUOISE AND DIAMOND TOI ET MOI RING**  
*mounted in platinum; size: 6*  
**\$2,000 - 3,000**

217  
**A DIAMOND ETERNITY BAND**  
*set with 37 french-cut diamonds, mounted in platinum; estimated total diamond weight: 1.10cts; size: 6 3/4*  
**\$2,000 - 3,000**

218  
**A DIAMOND OPEN LINK BRACELET**  
*mounted in 14k white gold; estimated total diamond weight: 3.20cts; length: 7 1/4in.*  
**\$1,500 - 2,000**

219  
**A PAIR OF TURQUOISE AND DIAMOND EAR PENDANTS**  
*mounted in 18k bi-color gold; estimated total diamond weight: 2.65cts; dimensions: 2 x 1 1/8in.*  
**\$3,000 - 5,000**



220



221



222



223

220  
**A DIAMOND, EMERALD AND ONYX  
PANTHER RING, FRENCH**

*mounted in 18k gold; size: 6 1/2; with French  
assay and workshop marks*

**\$2,000 - 3,000**

221  
**A DIAMOND STATION CHAIN**

*mounted in 18k gold; estimated total  
diamond weight: 34.00cts; gross weight  
approximately: 40 grams; length: 82in.*

**\$10,000 - 12,000**

222  
**A DIAMOND AND CHRYSOPRASE RING,  
VAN CLEEF & ARPELS**

*mounted in 18k gold; size: 5 1/2; signed:  
VCA; numbered: 75750*

**\$2,000 - 3,000**

223  
**A DIAMOND, EMERALD AND ONYX  
PANTHER HINGED BANGLE, FRENCH**

*mounted in 18k gold; estimated total  
diamond weight: 2.95cts; gross weight  
approximately: 41 grams; length: 6 1/4;  
French assay marks*

**\$4,000 - 6,000**

# Property of a California Lady

Lots 224-227



224



225



226



227

224  
**A PAIR OF RUBY AND EMERALD EAR CLIPS**  
centering two round cabochon-cut rubies, measuring approximately 6.21mm; mounted in 22k gold; gross weight approximately: 35 grams; dimensions: 2 3/4 x 1 1/4in.

**\$4,000 - 6,000**

225  
**AN AQUAMARINE AND DIAMOND RING**  
centering a rectangular step-cut aquamarine measuring approximately 22.45 x 17.93 x 10.38mm; mounted in 18k white gold; estimated total diamond weight: 2.05cts; size: 5 1/2

**\$6,000 - 8,000**

226  
**AN EMERALD AND DIAMOND RING**  
centering a rectangular step-cut emerald, measuring approximately 10.49 x 9.61 x 5.15mm; mounted in 14k white gold; estimated total diamond weight: 1.25cts; size: 6 1/2

**\$8,000 - 10,000**

227  
**AN EMERALD BROOCH**  
mounted in 18k bi-color gold; gross weight approximately: 40 grams; dimensions: 3 1/4 x 2 1/2in.

**\$3,000 - 5,000**



229



231



228



230

228

**A HEMATITE AND MOTHER-OF-PEARL RING, IPPOLITA**

comprised of an oval cabochon-cut mother-of-pearl, a hematite rose-cut double cabochon and a rock crystal and mother-of-pearl doublet; mounted in 18k gold; gross weight approximately: 26 grams; size: 7; signed: Ippolita

**\$1,500 - 2,000**

229

**A ROSE-CUT DIAMOND RING**

mounted in 18k rose gold; known diamond weight: 8.76cts; size: 7

**\$4,000 - 6,000**

230

**AN ENAMEL DRAGON BROOCH**

mounted in 14k and 18k gold; gross weight approximately: 48 grams; brooch measures: 2 7/8 x 2 1/4in.

**\$2,500 - 3,500**

231

**AN EMERALD AND DIAMOND PENDANT WITH GOLD CHAIN**

centering a pear mixed-cut emerald, measuring approximately: 11.70 x 8.83 x 5.52mm; mounted in yellow gold plated 18k white gold; 18k bi-color gold chain; estimated total diamond weight: 1.40cts; pendant dimensions: 1 1/4 x 5/8in.; chain length: 14in.

**\$1,200 - 1,800**



# Property from a Canadian Family

Lots 232-234



232



233



234

232

## **A LAVENDER JADE BANGLE WITH A JADE, DIAMOND AND AMETHYST RING**

*mounted in 14k gold; gross weight approximately: 49 grams; bracelet length: 6 1/2in; ring size: 5 3/4*

**\$1,200 - 1,800**

233

## **A GROUP OF GOLD WATCHES, OMEGA, BAUME ET MERCIER AND BULOVA**

*mounted in 14k and 18k gold; gross weight approximately: 166 grams*

**\$1,800 - 2,200**

234

## **A LAPIS LAZULI MEN'S RING**

*centering a lapis lazuli tablet measuring approximately 19.86 x 14.82 x 2.26mm; mounted in 14k gold; size: 10 1/2*

**\$600 - 800**



235



236

235  
**A HARDSTONE TORSADE NECKLACE, PALOMA PICASSO  
FOR TIFFANY & CO., 1982**

*mounted to a sterling silver clasp; gross weight approximately: 263 grams; length: 17 1/2in.; signed: Tiffany & Co. Paloma Picasso*

**\$1,500 - 2,000**

236  
**A PAVÉ DIAMOND EAGLE RING**

*mounted in 18k white gold; estimated total diamond weight: 3.00cts; size: 7 1/4; one diamond deficient*

**\$1,500 - 2,000**



237



239



238

**PROPERTY OF A SAN DIEGO,  
CALIFORNIA COLLECTOR**

**237  
A PAIR OF EMERALD AND DIAMOND  
EAR CLIPS AND PENDANT**

*mounted in 14k gold; estimated total  
diamond weight: 3.30cts; necklace length:  
16 3/4in.; ear clip dimension: 1 3/4 x 7/8in.*

**\$2,000 - 3,000**

**238  
A PAIR OF EMERALD AND DIAMOND  
EAR CLIPS**

*centering six rectangular step-cut emeralds  
measuring approximately from 4.85 x 3.48  
x 2.89 to 7.12 x 3.94 x 3.26mm; mounted  
in 14k white gold; estimated total diamond  
weight: 1.35cts; dimensions: 1 1/2 x 3/4in.*

**\$1,000 - 1,500**

**239  
A COLORED STONE AND DIAMOND  
DRAGONFLY BROOCH**

*mounted in 18k rose gold; gross weight  
approximately: 36 grams; dimensions: 3 1/2  
x 4 1/2in.*

**\$2,000 - 3,000**





240



242



241



243

240

**A PAIR OF DIAMOND EAR CLIPS**

*mounted in yellow gold plated 18k white gold; estimated total diamond weight: 2.20cts; dimensions: 3/4 x 21/32in.*

**\$1,800 - 2,200**

241

**A PINK TOURMALINE AND DIAMOND RING**

*centering an oval-shaped brilliant-cut tourmaline, measuring approximately 20.95 x 18.92 x 10.45mm; mounted in 18k gold; estimated total diamond weight: 1.05cts; size: 7*

**\$1,200 - 1,800**

242

**A DIAMOND AND RUBY KOALA BROOCH**

*mounted in 18k gold; dimensions: 1 1/2 x 1in.; numbered: 7321*

**\$1,000 - 1,500**

243

**A PINK TOURMALINE NECKLACE & EARCLIPS**

*necklace mounted in 18k gold; ear clips mounted in 14k gold; gross weight approximately: 94 grams; necklace length: 17in.; ear clip length: 1in*

**\$2,200 - 3,500**

**PROPERTY OF A LADY**





244



246



247



245

244

**A MORGANITE AND DIAMOND PENDANT**

centering a pear shaped brilliant-cut morganite measuring approximately 31.33 x 23.69 x 17.18mm; mounted in 18k gold; estimated total diamond weight: 2.35cts; gross weight approximately: 27 grams; length: 30in.

**\$3,000 - 5,000**

245

**A DIAMOND CURB LINK BRACELET**

mounted in 14k rose gold; estimated total diamond weight: 3.30cts; length: 7 1/2in.

**\$2,800 - 3,200**

246

**A PAVÉ DIAMOND RING, DAVID YURMAN**

mounted in 18k bi-color gold; estimated total diamond weight: 1.60cts; size: 9 1/2; signed: DY

**\$2,500 - 3,500**

247

**A PAIR OF PINK SAPPHIRE AND DIAMOND DAY/NIGHT EARRINGS, HOUSE OF TAYLOR**

mounted in 18k bi-color gold; gross weight approximately: 31 grams; measures: 2 3/8in.; signed: Taylor

**\$3,000 - 5,000**

# Property from a New Mexico Estate

Lots 248-259

248

## A GRADUATED RUBY BEAD NECKLACE

two hundred thirty-three faceted ruby beads measuring from 2.76 to 6.04mm; fixed to an 18k gold clasp; length: 20in.

\$800 - 1,000



248



249

249

## A BAROQUE CULTURED PEARL NECKLACE

comprised of 32 cultured baroque pearls; fixed to a 14k gold toggle clasp; length: 26 1/2in.

\$400 - 600

To be sold without reserve

250

## A PAIR OF DIAMOND AND RUBY DAGGER PENDANT EARRINGS

mounted in 14k gold; ear pendant drop: 2 1/2in.

\$800 - 1,000



250

251

**A DIAMOND, SAPPHIRE AND RUBY  
AXOLOTL RING, DANIELA VILLEGAS**

*mounted in 18k rose gold; gross weight  
approximately: 31 grams; size: 5 3/4; signed:  
Daniela V; accompanied by a signed hand  
rendering of the ring*

**\$6,000 - 8,000**



Original sketch of lot 251

# Property from a New Mexico Estate

Lots 248-259



252



253



254



255

252  
**A FREE-FORM DIAMOND RING, COOMI**  
*mounted in 20k gold; size: 5; signed: Coomi*

**\$3,000 - 5,000**

253  
**A FIRE OPAL BEAD NECKLACE**  
*one hundred seventeen faceted opal beads measuring from 5.01 to 9.05mm; fixed to a 22k gold clasp; length: 18in.*

**\$1,500 - 2,000**

254  
**A COLORED DIAMOND, DIAMOND AND TSAVORITE BEETLE RING, ILEANA MAKRI**

*mounted in blackened 18k white gold; estimated total diamond weight: 2.10cts; size: 6 3/4; signed: Makri (colored diamonds untested for origin of color)*

**\$2,000 - 3,000**

255  
**A COLORED DIAMOND STAG CUFF BRACELET**  
*mounted in 18k gold; estimated total diamond weight: 1.50cts; length: 6 1/4in. (colored diamonds untested for origin of color)*

**\$1,200 - 1,500**





257



260



258



259



256

256  
**A DIAMOND AND SAPPHIRE 'EYE LOVE' RING, ANA KATARINA**

centering an oval shaped carved onyx of an eye measuring approximately 19.71 x 15.75mm; mounted in 18k gold; size: 6 1/4; with maker's mark for Ana Katarina

**\$3,500 - 4,500**

257  
**A DIAMOND PENDANT NECKLACE**  
mounted in 18k gold; estimated total diamond weight: 2.70cts; necklace length: 19in.; dimensions: 3 x 1 1/4in.

**\$2,000 - 3,000**

258  
**A GARNET AND DIAMOND BANGLE, MID 19TH CENTURY**

centering an oval shaped cabochon-cut garnet measuring approximately 34.91 x 25.46mm; mounted in 18k gold; estimated total diamond weight: 1.40cts; length: 6 3/4in.

**\$3,000 - 5,000**

259  
**A DIAMOND EAGLE RING, CARRERA Y CARRERA**  
mounted in 18k gold; size: 7; maker's mark for: Carrera y Carrera; numbered: 91391

**\$2,500 - 3,500**

260  
**A FREE-FORM TOPAZ RING**  
centering a round brilliant-cut topaz measuring approximately 12.57 x 12.27mm; mounted in 18k gold; size: 7 1/4

**\$800 - 1,000**  
**To be sold without reserve**



263



262



261



264

261

**A DIAMOND AND NATURAL PEARL BROOCH**

centering a natural pearl measuring approximately 7.61 x 7.63mm; mounted in 18k bi-color gold; estimated total diamond weight: 2.00cts; dimensions: 1 1/4 x 7/8in.

**\$1,000 - 1,500**

Accompanied by GIA report #2203670078, dated October 18, 2019, stating the Pearl as: Natural Pearl, no indications of heat treatment.

262

**AN EMERALD AND DIAMOND RING**

centering a square-shaped step-cut emerald measuring approximately 7.01 x 7.09 x 3.66mm; mounted in platinum; size: 9 3/4

**\$1,500 - 2,000**

263

**A NEPHRITE AND ENAMEL BROOCH, DESIGNED BY LOUIS COMFORT TIFFANY, CIRCA 1910**

centering an oval shaped cabochon-cut nephrite measuring approximately 12.58 x 5.82 x 3.85mm; mounted in 14k gold; dimensions: 1 1/2 x 3/8in.; signed: Tiffany & Co.

**\$1,500 - 2,500**

264

**A GARNET PENDANT, MID 19TH CENTURY**

centering two oval shaped cabochon-cut garnets measuring from 20.66 x 13.44 to 27.78 x 19.90mm; mounted in 22k gold; gross weight approximately: 46 grams; dimensions: 3 1/2 x 2 1/8in.

**\$3,500 - 4,500**

**PROPERTY FROM A NEW MEXICO ESTATE**



266



265



267



**PROPERTY FROM A NEW YORK COLLECTION**

265  
**A GROUP OF TWO BROOCHES**  
*mounted in 14k gold and platinum; pearl brooch dimensions: 1 1/4in.; platinum brooch dimensions: 1 3/8 x 1 1/8in.; platinum brooch partially signed VCA*

**\$2,500 - 3,500**

266  
**A MOTHER OF PEARL AND PEARL DRESS SET, TIFFANY & CO.**  
*mounted in platinum and 14k gold; signed: Tiffany & Co.*

**\$800 - 1,000**  
To be sold without reserve

267  
**AN OPAL HINGED BANGLE TOGETHER WITH AN OPAL BROOCH**  
*mounted in 14k gold; gross weight approximately: 32 grams; bracelet length: 7 1/2in.; brooch dimensions: 1 1/2 x 1 1/2in.*

**\$1,200 - 1,500**

# Property of a Prominent Los Angeles Lady

Lot 268-277



269



271



268



270

268  
**A DIAMOND AND COLORED STONE LION BROOCH**  
mounted in 18k bi-color gold; dimensions: 1 3/4 x 1in.

\$1,200 - 1,500

269  
**A DIAMOND AND EMERALD BRACELET**  
mounted in 18k bi-color gold; gross weight approximately: 54 grams; length: 6 1/4in.

\$2,000 - 3,000

270  
**A DIAMOND AND RUBY WATCH**  
manual wind movement, mounted in 18k bi-color gold; gross weight approximately: 72 grams; case diameter: 32mm; length: 7in.

\$2,000 - 3,000

271  
**A PAIR CULTURED PEARL AND DIAMOND EAR CLIPS**  
mounted in 14k gold; dimensions: 1 1/2 x 1 1/8in.

\$800 - 1,000





272



274



273



275

272

**A DIAMOND BYPASS RING**

*mounted in 18k bi-color gold; size: 5*

**\$1,000 - 1,500**

273

**AN AMETHYST AND DIAMOND RING**

*centering an oval shaped brilliant-cut amethyst measuring approximately 16.44 x 11.94 x 7.99mm; mounted in 18k bi-color gold; estimated total diamond weight: 1.00ct; gross weight approximately: 26 grams; size: 6*

**\$1,500 - 2,000**

274

**AN ENAMEL CHEETAH BROOCH**

*mounted in 18k gold; dimensions: 2 x 1 1/4in.*

**\$1,500 - 2,000**

275

**A GOLD AND DIAMOND CROSSOVER BANGLE**

*mounted in 18k bi-color gold; estimated total diamond weight: 6.65cts; gross weight approximately: 44 grams; length: 6 1/4in.*

**\$4,000 - 6,000**

# Property of a Prominent Los Angeles Lady

Lot 268-277



276



277

276  
**A PAIR OF DIAMOND, SAPPHIRE AND EMERALD EAR CLIPS,  
FRENCH**

*mounted in 18k gold; estimated total diamond weight: 1.65cts;  
dimensions: 7/8 x 3/4in.; with French assay marks*

**\$2,500 - 3,500**

277  
**A DIAMOND AND SAPPHIRE WATCH, PATEK PHILIPPE,  
CIRCA 1965**

*mounted in 18k gold; estimated total diamond weight: 4.30cts; gross  
weight approximately: 114 grams; length: 7in.; case stamped: PP co.  
Accompanied by a certificate of origin from Patek Philippe*

**\$8,000 - 10,000**







278



281



279



280



282

**278  
A PAIR OF LAPIS LAZULI AND DIAMOND  
EAR CLIPS, TIFFANY & CO.**

*mounted in 18k gold; estimated total  
diamond weight: 1.00ct; dimensions: 3/4 x  
3/4in.; signed: Tiffany & Co.*

**\$1,500 - 2,000**

**279  
A COLORED DIAMOND AND DIAMOND  
RING**

*centering a round brilliant-cut diamond  
weighing approximately 1.15cts; mounted  
in 18k gold; estimated remaining diamond  
weight: 2.25cts; size: 7  
(colored diamonds unteted for origin of color)*

**\$3,000 - 5,000**

**280  
A DIAMOND LINE BRACELET**  
*mounted in 18k gold; estimated total  
diamond weight: 10.40cts; length: 7 1/2in.*

**\$4,000 - 6,000**

**281  
A PAIR OF PAVÉ DIAMOND PENDANT  
EAR CLIPS**  
*mounted in 18k gold; estimated total  
diamond weight: 1.60cts; dimensions: 1 1/8  
x 3/4in.*

**\$1,500 - 2,000**

**282  
18KT YELLOW GOLD LADY'S  
'PANTHERE' WRISTWATCH, CARTIER**  
*quartz movement case and dial signed case  
dimensions: 22 x 22mm; length: 6in.; gross  
weight approximately: 66 grams*

**\$3,000 - 5,000**





283

283

**A PAVÉ DIAMOND RING**

*mounted in platinum and 18k gold; estimated total diamond weight: 1.90cts; size: 6 1/2*

**\$1,500 - 2,000**

284

284

**A SAPPHIRE, RUBY AND DIAMOND NECKLACE AND EAR CLIP SET**

*mounted in 18k gold; estimated total diamond weight: 12.75cts; gross weight approximately: 129 grams; necklace length: 17in.; earring length: 1 5/8in.*

**\$8,000 - 10,000**

285

285

**A PAIR OF PAVÉ DIAMOND EAR CLIPS**

*mounted in 14k gold; estimated total diamond weight: 4.75cts; dimensions: 1 x 1/2in.*

**\$1,500 - 2,000**



286



287

288



289

286  
**A RUBELLITE RING AND EAR CLIP SET, POMELLATO**  
*mounted in 18k gold; gross weight approximately: 37 grams, ring size: 5 3/4; signed: Pomellato*  
**\$2,500 - 3,500**

287  
**A GRADUATED NATURAL PEARL NECKLACE WITH DIAMOND AND PEARL CLASP**  
*comprised of one hundred twenty-one pearls near round and oval-shaped measuring from 2.59 to 7.30mm; strung with a 10k white gold clasp, engraved S.G.K; length: 22in.*  
**\$1,500 - 2,500**  
 Accompanied by GIA report #5202483090, dated August 14, 2019, stating the pearls as: 114 natural saltwater pearls, with eight undetermined freshwater pearls ranging in size from 2.59-7.30mm



290



293



294



292



291

**PROPERTY OF AN ARIZONA COLLECTOR**

290  
**A DIAMOND CLUSTER RING**  
*mounted in 14k white gold; estimated total diamond weight: 3.95cts; size: 7 3/4*

**\$3,000 - 5,000**

291  
**A PAVÉ DIAMOND RING**  
*mounted in 14k gold; estimated total diamond weight: 4.00cts; size: 6 3/4*

**\$1,800 - 2,200**

292  
**A RUBY AND DIAMOND RING**  
*centering an oval brilliant-cut ruby measuring 8.84 x 8.34 x 4.49mm; mounted in platinum; estimated total diamond weight: 1.55cts; size: 6*

**\$6,000 - 8,000**

Accompanied by GIA report #5201730308, dated November 14, 2019, stating the Ruby as: Natural Corundum, no indications of heating, Burmese in origin.

293  
**A DOUBLE ROW DIAMOND BRACELET**  
*mounted in 14k white gold; estimated total diamond weight: 3.00cts; length: 6 3/4in.*

**\$1,200 - 1,800**

**PROPERTY FROM A NEW MEXICO ESTATE**

294  
**A ROSE-CUT RUBY NECKLACE, GURHAN**  
*centering a rose-cut ruby measuring approximately 28.95 x 21.01mm; mounted in 24k gold with 18k gold clasp; length: 18in.; signed: Gurhan; numbered: NA14215*

**\$2,500 - 3,500**

**PROPERTY FROM RONALD & GLORIA SAVIN, RANCHO MIRAGE, CALIFORNIA**

288  
**A LADY'S DIAMOND, STEEL AND GOLD 'AVANT GARDE' BRACELET WATCH BAUME & MERCIER**

*quartz movement; case and movement signed, case numbered: 5234.050 and 1486655 case diameter: 21mm; length: 6 1/2 in.*

**\$400 - 600**

289  
**A DIAMOND AND RUBY BYPASS RING**  
*mounted in 18k white gold; size: 6 1/4*

**\$1,000 - 1,500**



295



296



298



297

**PROPERTY OF A SAN DIEGO,  
CALIFORNIA COLLECTOR**

295  
**A RUBY SHAKE PENDANT**  
*mounted in 18k gold; length: 17 3/4in.*

**\$1,000 - 1,500**

296  
**A DIAMOND RIVIÈRE NECKLACE**  
*mounted in 18k gold; estimated total  
diamond weight: 5.00cts; length: 16 1/2in.*

**\$2,500 - 3,500**

297  
**A DIAMOND AND RUBY SCORPION  
BROOCH**  
*mounted in 18k bi-color gold; estimated  
total diamond weight: 1.40cts; gross weight  
approximately: 33 grams; dimensions: 2 3/4  
x 1 1/2in.*

**\$600 - 800**  
**To be sold without reserve**

298  
**A RUBY AND DIAMOND HANDS  
NECKLACE, CELLINI**  
*mounted in 18k gold; length: 17in.; chain  
signed: Cellini*

**\$1,000 - 1,500**





299

299  
**A GOLD LINK NECKLACE**  
mounted in 18k gold; gross weight  
approximately: 88 grams; length: 16in.

**\$2,200 - 3,200**



300

300  
**A GOLD AND STEEL COIL BANGLE,  
BULGARI**  
comprised of steel and 18k gold; gross  
weight approximately: 55 grams; length:  
6 1/2in.; signed: Bulgari

**\$2,000 - 3,000**



301

301  
**A PAIR OF DIAMOND EAR PENDANTS**  
mounted in 18k bi-color gold; estimated total  
diamond weight: 3.70cts; dimensions:  
2 x 1/2in.

**\$2,500 - 3,500**



302

303

304

**PROPERTY OF AN ARIZONA LADY**

302  
**A SAPPHIRE AND DIAMOND RING AND A PINK TOURMALINE AND DIAMOND RING**  
*mounted in platinum and 18k white gold; estimated total diamond weight: 1.35cts; sizes: 6 1/2 and 6 3/4*  
**\$1,200 - 1,500**

303  
**A DIAMOND OMEGA CHAIN TOGETHER WITH AN OMEGA CHAIN**  
*mounted in 14k bi-color gold; estimated total diamond weight: 1.25cts; gross weight approximately: 31 grams; lengths: 17 1/8 to 17 3/4in.*  
**\$1,200 - 1,500**

304  
**A CITRINE AND PINK SAPPHIRE RING WITH DIAMONDS, PAOLO COSTAGLI**  
*centering a rectangular step-cut citrine measuring approximately 11.12 x 9.05 x 5.74; mounted in 18k bi-color gold; size: 7; signed: PC; with signed pouch*  
**\$1,500 - 2,000**



305



307



308



306

305  
**A COLORED SAPPHIRE AND DIAMOND  
FLOWER BROOCH**

*mounted in 18k white gold; estimated  
total diamond eight: 1.05cts; gross weight  
approximately: 25 grams; dimensions: 1 7/8  
x 1 1/2in.*

**\$1,000 - 1,500**

306  
**A MULTI-STRAND DIAMOND BRACELET**

*mounted in 18k white gold; estimated total  
diamond weight: 2.25cts; gross weight  
approximately: 41 grams; length: 7in.*

**\$4,500 - 5,500**

307  
**A RUBY AND DIAMOND FLOWER  
BROOCH**

*mounted in platinum; estimated total  
diamond weight: 4.85cts; measurement:  
2 3/8 x 1 1/4in.*

**\$4,000 - 6,000**

308  
**A PINK SAPPHIRE AND DIAMOND  
PENDANT**

*centering a curved trillion-cut pink sapphire  
measuring approximately 7.21 x 7.60 x  
3.38mm; mounted in platinum; length: 18in.*

**\$1,000 - 1,500**



309

309  
**A CULTURED PEARL AND DIAMOND RING**  
centering a cultured pearl measuring approximately 14.56 x 14.71mm; mounted in 18k gold; size: 7; signed: AOJ

**\$1,200 - 1,500**

310  
**A SAPPHIRE AND DIAMOND RING, PIAGET**  
mounted in 18k gold; size: 6; signed: Piaget

**\$1,200 - 1,500**  
To be sold without reserve



310

311  
**A CARVED PINK TOURMALINE PENDANT WITH PINK AND WHITE DIAMONDS**  
centering a carved pink tourmaline measuring approximately 38.30 x 38.33 x 4.14mm; mounted in 18k rose gold, together with a 14k rose gold necklace; estimated total diamond weight: 2.50cts; gross weight approximately: 38 grams; necklace length: 36in.; pendant measures: 2 1/2 x 2 1/8in. (colored diamonds untested for origin of color)

**\$5,000 - 7,000**



311



312

312  
**A PAIR OF EBONY, TURQUOISE AND DIAMOND EAR CLIPS**  
mounted in 18k gold; dimensions: 1 x 3/4in.

**\$1,000 - 1,500**





313

314

315

**PROPERTY OF A CALIFORNIA LADY  
LOTS 313-314**

313

**A DIAMOND RING**

centering a round brilliant-cut diamond weighing approximately 3.70cts; mounted in platinum; size: 4

**\$8,000 - 10,000**

314

**AN 18K GOLD STRAP BRACELET**

comprised of tri-color gold; gross weight approximately: 125 grams; length: 7 3/4in.

**\$2,000 - 3,000**

315

**A PAIR OF DIAMOND CLUSTER EAR CLIPS**

set with 14 pear and marquise-shaped diamonds; mounted in platinum and 18k white gold; estimated total diamond weight: 8.70cts; dimensions: 7/8 x 3/4in.

**\$25,000 - 35,000**

Accompanied by fourteen GIA reports:  
Please see department for reports.



316



317



319



318

**PROPERTY OF AN ARIZONA LADY**

316  
**A COLORED DIAMOND HEART NECKLACE**  
centering a heart modified brilliant-cut diamond weighing 1.01cts; mounted in 18k gold; total known diamond weight: 1.01cts; length: 16 1/4in.  
**\$2,200 - 2,800**

Accompanied by GIA report #2201538568, dated August 27, 2019, stating the Diamond as: Natural, Fancy Yellow, SI1 clarity.

317  
**A PAVÉ DIAMOND BRACELET**  
mounted in 14k bi-color gold; estimated total diamond weight: 9.25cts; gross weight approximately: 34 grams; length: 7 1/4in.  
**\$4,000 - 6,000**

**PROPERTY OF A SAN DIEGO, CALIFORNIA COLLECTOR**

318  
**AN AMETHYST RING**  
centering a pear shaped brilliant-cut amethyst measuring approximately 27.30 x 20.68 x 13.14mm; mounted in 14k gold; size: 6 1/4  
**\$1,200 - 1,500**

319  
**AN AMETHYST AND DIAMOND RING**  
centering an oval shaped modified brilliant-cut amethyst measuring approximately 11.83 x 9.87 x 5.77mm; mounted in 14k gold; size: 6  
**\$800 - 1,000**  
**To be sold without reserve**



320



321



322



**PROPERTY OF A LADY**

320  
**A DIAMOND TIE PIN**  
centering an old mine-cut diamond weighing approximately 3.35cts; mounted in 14k bi-color gold

**\$3,000 - 5,000**

321  
**A TANZANITE AND DIAMOND RING AND BRACELET**  
mounted in 14 and 18k bi-color gold; estimated total diamond weight: 5.30cts; gross weight approximately: 26 grams; ring size: 6 1/2; bracelet length: 7 1/2in.

**\$1,000 - 1,500**  
To be sold without reserve

322  
**AN AMETHYST PENDANT, RING, AND EAR PENDANTS**  
mounted in 14k gold; estimated total diamond weight: 1.20cts; gross weight approximately: 40 grams; necklace length: 20 1/4in; ring size: 6 1/2

**\$1,500 - 2,500**





323

**323**  
**A PAIR OF GEM-SET HARD STONE EAR PENDANTS**  
set with mixed-cut tourmalines, emeralds, diamonds and chrysoprase; mounted in 18k gold; gross weight approximately: 45 grams; dimensions: 2 1/2 x 1in.

**\$1,200 - 1,500**



324

**324**  
**A MULTI-COLOR CULTURED PEARL AND GEM-SET TORSADE NECKLACE AND BRACELET**  
each designed as multi-strands of gray and white cultured pearls; gross weight approximately: 130 grams; necklace length: 17in.; bracelet length: 9in. (pearls untested for origin of color)

**\$2,000 - 4,000**





325

325  
**A CITRINE AND DIAMOND RING**  
*mounted in 14k gold; size: 6*

**\$1,200 - 1,800**



326

**PROPERTY OF A THOUSAND OAKS, CA COLLECTOR**

326  
**A GRADUATED CULTURED PEARL NECKLACE**  
*comprising of a strand of golden pearls measuring approximately from 10.00 to 13.91mm; mounted in 18k gold; gross weight approximately: 82 grams; length: 19 1/2in. (pearls untested for origin of color)*

**\$3,000 - 5,000**



327

327  
**A LADIES WRISTWATCH, PIAGET**  
*with an oval tiger's eye and onyx dial, mounted in 18k gold; case diameter: 25mm; strap length: 6in.; signed: Piaget; numbered: 9341 249538*

**\$1,500 - 2,500**



329



328



331



330

328  
**A CAT'S EYE CHRYSOBERYL AND DIAMOND BALLERINA RING**  
 centering an oval shaped cabochon-cut cat's eye chrysoberyl measuring approximately 12.28 x 11.15 x 8.11mm; *mounted in platinum; known diamond weight: 1.78cts; size: 6 1/4*

**\$6,000 - 8,000**

329  
**A DIAMOND BRACELET, MOUAWAD**  
 set as a line of diamond clusters with a known weight of 6.38cts; *mounted in 18k white gold; length: 6 3/4in.; signed: Mouawad*

**\$4,000 - 6,000**

330  
**A JADE AND DIAMOND RING**  
 centering an oval shaped cabochon-cut jade, measuring approximately 15.40 x 21.50 x 6.70mm; *mounted in 14k bi-color gold; size: 6*

**\$2,500 - 3,500**

Accompanied by Mason Kay report #191113-1370, dated November 13, 2019, stating: Natural Jadeite Jade-No Dye or Impregnation detected-'A' Jade.

331  
**A PAIR OF CAT'S EYE CHRYSOBERYL AND DIAMOND EAR CLIPS**  
 centering six cat's eye chrysoberyl, measuring approximately from 4.17 to 4.77mm; *mounted in platinum and 18k gold; estimated total diamond weight: 1.05cts; dimensions: 1 1/8 x 1/2in.*

**\$1,800 - 2,200**



332



333



335



334

**PROPERTY OF AN ARIZONA LADY**

332  
**A SAPPHIRE AND DIAMOND RING**  
centering a cushion brilliant-cut sapphire  
weighing 11.68cts; *mounted in platinum;*  
size: 6

**\$5,000 - 7,000**

Accompanied by GIA report #6203623901,  
dated October 10, 2019, stating the  
Sapphire as: natural corundum, with  
indications of heat treatment.

333  
**AN AMETHYST AND DIAMOND RING**  
centering a rectangular step-cut amethyst  
measuring approximately 12.00 x 10.78 x  
7.67mm; *mounted in 14k gold and platinum;*  
*estimated total diamond weight: 1.10cts;*  
size: 6 1/4

**\$1,600 - 1,800**

334  
**A PAVÉ DIAMOND BRACELET**  
*mounted in 18k white gold; estimated total  
diamond weight: 7.35cts; gross weight  
approximately: 51 grams; length: 7in.*

**\$2,000 - 3,000**

335  
**A PAIR OF DIAMOND EAR PENDANT**  
*mounted in 14k white gold; dimensions:  
2 5/8 x 2 5/8in.*

**\$1,000 - 1,500**



336



337



338



339

**PROPERTY FROM A NEW MEXICO ESTATE**

**336  
A WHITE GOLD AND DIAMOND 'SWIRL' RING, VAN CLEEF & ARPELS**

*mounted in 18k white gold; size: 7; signed: VCA; numbered: B8034 D19*

**\$3,500 - 5,500**

**337  
A DIAMOND AND COLORED DIAMOND RING**

*mounted in 18k white gold; estimated total white diamond weight: 1.70cts; size: 6 1/4; (colored diamonds untested for origin of color)*

**\$1,200 - 1,500**

**To be sold without reserve**

**338  
A WATCH, AUDEMARS PIGUET, RETAILED THROUGH TÜRLER**

*manual wind, in working condition; mounted in 18k white gold; estimated total diamond weight: 1.20cts; gross weight approximately: 50 grams; case dimensions: 24.26 x 20.11mm; length: 6 3/4in.; signed: Audemars Piguet; numbered: 37565*

**\$2,000 - 3,000**

**339  
A PAIR OF TURQUOISE AND DIAMOND EAR PENDANTS**

*centering oval shaped cabochon-cut turquoise measuring approximately 21.06 x 14.19 x 7.07mm; mounted in 18k white gold; estimated total diamond weight: 1.60cts; ear pendant drop: 2 1/4in.*

**\$1,800 - 2,200**





340

**340**  
**A DIAMOND CLUSTER RING**  
centering an oval shaped brilliant-cut diamond weighing approximately 1.95cts; mounted in platinum; estimated remaining diamond weight: 1.60cts; size: 4

**\$3,000 - 5,000**



341

**PROPERTY OF AN ARIZONA LADY**

**341**  
**A FLORAL-FORM DIAMOND NECKLACE**  
mounted in 14k white gold; estimated total diamond weight: 2.60cts; gross weight approximately: 35 grams; length: 17 3/4in.

**\$2,500 - 3,500**



342



**342**  
**A PAIR OF AQUAMARINE, TOURMALINE AND DIAMOND EAR CLIPS**  
mounted in 18k white gold; gross weight approximately: 35 grams; dimensions: 2 x 2in.

**\$1,500 - 2,000**



344

345



343

343  
**AN INVISIBLY-SET DIAMOND BRACELET**  
*mounted in 18k white gold; estimated total diamond weight: 19.00cts; gross weight approximately: 48 grams; length: 7in.*

**\$6,000 - 8,000**

344  
**A DIAMOND LINK NECKLACE**  
*mounted in 18k white gold; estimated total diamond weight: 21.80cts; length: 16 1/2in.*

**\$5,000 - 7,000**

345  
**A CULTURED PEARL, SAPPHIRE AND DIAMOND SNAKE RING**  
*centering a baroque cultured pearl measuring approximately 17.90 x 16.30 x 16.35mm; mounted in black rhodium plated 18k white gold; estimated total diamond weight: 2.85cts; gross weight approximately: 29 grams; size: 7*

**\$5,000 - 7,000**

346  
**A COLOR CHANGE SAPPHIRE AND DIAMOND BALLERINA RING**  
*centering a cushion modified brilliant-cut color change sapphire weighing 5.66cts; mounted in platinum; size: 4 1/2*

**\$8,000 - 10,000**

Accompanied by GIA report #2201052688, dated February 12, 2019, stating the Sapphire as: natural corundum, no indications of heating.



347



346



348



349



350

347

**A PAIR OF SAPPHIRE AND DIAMOND EARRINGS**

*mounted in 18k white gold; estimated total diamond weight: 4.05cts; dimensions: 3/4 x 3/4in.*

**\$4,500 - 5,000**

348

**A GRADUATED DIAMOND NECKLACE**

*mounted in 14k white gold; estimated total diamond weight: 14.00; length: 32in.*

**\$4,000 - 6,000**

349

**A TANZANITE AND DIAMOND RING**

*centering an oval brilliant-cut tanzanite measuring approximately 23.56 x 18.63 x 11.98mm; mounted in platinum; estimated total diamond weight: 1.90cts;*

**\$6,000 - 8,000**

350

**A FANCY COLORED DIAMOND**

*weighing 1.00ct and measuring 5.49 x 5.37 x 3.67mm*

**\$2,000 - 3,000**

*Accompanied by GIA report #6204306158, dated May 23, 2019, stating the Diamond as: Natural, Fancy Light Yellow, Even, VVS1 clarity.*

# Property of a Northern California Collector

Lots 351-368



351

352

351  
**A PAIR OF AQUAMARINE AND DIAMOND EAR CLIPS**

centering two pear-shaped cabochon-cut aquamarines measuring approximately 23.60 x 16.25 x 8.01mm; mounted in 18k bi-color gold; estimated total diamond weight: 4.75cts; dimensions: 1 3/4 x 1in.

**\$1,500 - 2,000**

352  
**AN OPEN LINK DIAMOND NECKLACE**

mounted in 18k white gold; estimated total diamond weight: 30.90cts; gross weight approximately: 61 grams; length: 19 1/2in.

**\$12,000 - 18,000**

353  
**A GEM-SET DIAMOND AND COLORED DIAMOND HINGED BANGLE**

mounted in 18k blackened gold; estimated total white diamond weight: 3.65cts; estimated total cognac diamond weight: 5.85cts; gross weight approximately: 96 grams; length: 7in.; (Colored diamonds untested for origin of color)

**\$4,000 - 6,000**





354



355



357



353



356

**354  
A PAIR OF COLORED DIAMOND AND  
DIAMOND EAR CLIPS**

*mounted in 18k white gold; estimated total white diamond weight: 2.95cts; ear clip dimension: 1 1/8 x 1 1/8in.*

**\$1,000 - 1,500**

**355  
A PAIR OF GOLD EAR CLIPS, TIFFANY &  
CO., ITALY**

*mounted in 18k gold, gross weight approximately: 34 grams; dimensions: 1 3/4 x 1in.; signed: Tiffany*

**\$1,000 - 1,500**

**356  
A PAIR OF DIAMOND FLOWER  
CLIPS**

*mounted in 18k gold; gross weight approximately: 26 grams; ear clip dimension: 1 1/8 x 1 1/4in.*

**\$1,000 - 1,500**

**357  
AN OPAL, CULTURED PEARL, DIAMOND  
AND EMERALD DOUBLE CLIP BROOCH**

*centering an oval shaped cabochon-cut opal measuring approximately 26.42 x 22.00mm; mounted in platinum; estimated total diamond weight: 1.50cts; gross weight approximately: 80 grams; dimensions: 2 1/4 x 2 1/8in.*

**\$4,000 - 6,000**

# Property of a Northern California Collector

Lots 351-368



358



359



360

358  
**A PAIR OF TANZANITE AND DIAMOND  
EAR CLIPS**

*mounted in 18k white gold, estimated total diamond weight: 2.65cts; gross weight approximately: 27 grams; dimensions: 1 1/4 x 3/4in.*

**\$2,000 - 3,000**

359  
**A CARVED BLUE CHALCEDONY AND  
GEM-SET BROOCH**

*centering an oval shaped brilliant-cut sapphire measuring approximately 8.09 x 6.57mm; mounted in 18k gold; gross weight approximately: 35 grams; dimensions: 2 1/2 x 2 1/4in.*

**\$1,000 - 1,500**

360  
**A TANZANITE AND DIAMOND  
NECKLACE**

*centering a pear shaped brilliant-cut tanzanite measuring approximately 15.84 x 10.03 x 8.50mm; mounted in 14k gold, gross weight approximately: 52 grams; length: 17in.*

**\$1,000 - 1,500**



362



364



361



363



361  
**A DIAMOND "SPIDER WEB" BRACELET**  
*mounted in 18k bi-color gold; known diamond weight: 15.20cts; gross weight approximately: 73 grams; length: 6 3/4in.*

**\$3,000 - 5,000**

362  
**AN 18K GOLD BROOCH**  
*mounted in 18k gold; gross weight approximately: 67 grams; dimensions: 3 x 2 3/4in.*

**\$1,000 - 1,500**

363  
**A PAIR OF GREEN TOURMALINE EAR CLIPS TOGETHER WITH A GREEN TOURMALINE AND DIAMOND BROOCH**  
*mounted in 14k and 18k gold; gross weight approximately: 32 grams; ear clip dimensions: 7/8 x 3/4in; brooch dimensions: 2 x 1 3/4in.*

**\$1,000 - 1,500**

364  
**A DIAMOND CUFF BRACELET**  
*mounted in 18k bi-color gold; estimated total diamond weight: 1.45cts; gross weight approximately: 48 grams; length: 7in.*

**\$1,000 - 1,500**



# Property of a Northern California Collector

Lots 351-368



365



368



366



367

365  
**A PAIR OF PINK TOURMALINE AND DIAMOND EAR CLIPS, BULGARI**

*mounted in 18k gold; estimated total diamond weight: 1.20cts; gross weight approximately: 29 grams; dimensions: 2 6/8 x 7/8in.; signed: Bulgari*

**\$4,000 - 6,000**

366  
**A DIAMOND AND CULTURED PEARL BROOCH, MARIO BUCCELLATI, ITALY**

*mounted in 18k gold, gross weight approximately: 28 grams; dimensions: 3 1/2 x 2 1/8in.; signed: M. Buccellati*

**\$3,000 - 5,000**

367  
**A PAIR OF GEM-SET EAR CLIPS, BULGARI**

*mounted in 18k gold; gross weight approximately: 28 grams; dimensions: 1 1/4 x 3/4in.; signed: Bulgari*

**\$3,000 - 5,000**

368  
**AN AMETHYST, CITRINE AND DIAMOND CUFF, BULGARI**

*centering a sugar loaf cabochon-cut citrine measuring approximately 17.12 x 17.04 and two sugar loaf-cut cabochon amethyst measuring approximately 17.36 x 17.25mm; mounted in 18k gold; estimated total diamonds weight: 3.00cts; gross weight approximately: 151 grams; length: 6 1/4in.; signed: Bulgari*

**\$7,000 - 10,000**

**END OF SALE**





# Conditions of sale

The following Conditions of Sale, as amended by any published or posted notices or verbal announcements during the sale, constitute the entire terms and conditions on which property listed in the catalog shall be offered for sale or sold by Bonhams & Butterfields Auctioneers Corp. and any consignor of such property for whom Bonhams acts as agent. By participating in this sale, you agree to be bound by these terms and conditions.

If live online bidding is available for the subject auction, additional terms and conditions of sale relating to online bidding will apply; see [www.bonhams.com/WebTerms](http://www.bonhams.com/WebTerms) for the supplemental terms. As used herein, "Bonhams," "we" and "us" refer to Bonhams & Butterfields Auctioneers Corp.

1. As used herein, the term "bid price" means the price at which a lot is successfully knocked down to the buyer. The term "purchase price" means the aggregate of (a) the bid price, (b) a PREMIUM retained by us and payable by the buyer (the "buyer's premium"), EQUAL TO 27.5% OF THE FIRST \$3,000 OF THE BID PRICE, 25% OF THE AMOUNT OF THE BID PRICE ABOVE \$3,000 UP TO AND INCLUDING \$400,000, 20% OF THE AMOUNT OF THE BID PRICE ABOVE \$400,000 UP TO AND INCLUDING \$4,000,000, AND 13.9% OF THE AMOUNT OF THE BID PRICE OVER \$4,000,000, and (c) unless the buyer is exempt by law from the payment thereof, any Alabama, Arizona, California, Colorado, Connecticut, Florida, Georgia, Hawaii, Idaho, Illinois, Iowa, Indiana, Kentucky, Louisiana, Maine, Massachusetts, Michigan, Minnesota, Nevada, New Jersey, New York, North Carolina, Ohio, Pennsylvania, Rhode Island, Texas, Utah, Virginia, Washington, D.C., Washington, Wisconsin, Wyoming or other state or local sales tax (or compensating use tax) and other applicable taxes. With regard to New York sales tax, please refer to the "Sales and Use Tax" section of these Conditions of Sale.

2. In order to bid at the sale, prospective bidders must submit to Bonhams a completed bidder registration form (appearing at the end of this catalog) and any other requested information or references. New bidders and bidders who have not recently updated their registration information must pre-register to bid at least two business days before the sale. Individuals will be required to provide government-issued proof of identity and proof of address. Entity clients will be required to provide documentation including confirmation of entity registration showing the registered name, confirmation of registered address, documentary proof of officers and beneficial owners, proof of authority to transact on behalf of the entity and government-issued proof of identity for the individual who is transacting on the entity's behalf.

We may also request a financial reference and /or deposit from bidders before approving the bidder registration. In the event a deposit is submitted and you are not the successful bidder, your deposit will be returned to you. If you are the successful bidder, any such deposit will be credited to offset the appropriate portion of the purchase price.

We reserve the right to request further information, including regarding the source of funds, in order to complete bidder identification and registration procedures (including completing any anti-money laundering and/or anti-terrorism financing checks we may require) to our satisfaction. If our bidder identification and registration procedures are not satisfied, we may, in our sole discretion, decline to register any bidder or reject any bid or cancel any sale to such bidder.

Every bidder shall be deemed to act as a principal unless prior to the commencement of the sale there is a written acceptance by Bonhams of a bidder registration form completed and signed by the principal which clearly states that the authorized bidding agent is acting on behalf of the named principal. Absent such written acceptance by Bonhams, any person placing a bid as agent on behalf of another (whether or not such person has disclosed that fact or the identity of the principal) may be jointly and severally liable with the principal under any contract resulting from the acceptance of a bid. Every bidder shall be responsible for

any use of its assigned paddle or bidding account, regardless of the circumstances.

3. You represent and warrant that: (i) you have provided us with true and correct copies of valid identification and proof of residence and, if applicable, financial and/or corporate documents; (ii) neither you, your principal (if applicable, and subject to Bonhams' prior written acceptance pursuant to paragraph 2 above), nor any individual or entity with a beneficial or ownership interest in either or in the purchase transaction is on the Specially Designated Nationals List maintained by the Office of Foreign Assets Control of the U.S. Department of the Treasury nor subject to any other sanctions or embargo program or regulation in effect in the United States, European Union, England and Wales, or other applicable jurisdictions; (iii) if you are acting as an agent for a principal, you have conducted appropriate due diligence into such principal, and agree that Bonhams shall be entitled to rely upon such due diligence, you will retain adequate records evidencing such due diligence for a period of five (5) years following the consummation of the sale, and will make these records available for inspection upon Bonhams' request; (iv) neither the purchase transaction (including your bidding activity) nor the purchase funds are connected with nor derive from any criminal activity, and they are not designed to nor have they or shall they, violate the banking, anti-money laundering, or currency transfer laws or other regulations (including without limitation, import-export laws) of any country or jurisdiction, or further any other unlawful purpose, including without limitation collusion, anti-competitive activity, tax evasion or tax fraud.

You acknowledge and agree that we may rely upon the accuracy and completeness of the foregoing warranties.

4. On the fall of the auctioneer's hammer, the highest bidder shall have purchased the offered lot in accordance and subject to compliance with all of the conditions set forth herein and (a) assumes full risk and responsibility therefor, (b) if requested will sign a confirmation of purchase, and (c) will pay the purchase price in full or such part as we may require for all lots purchased. No lot may be transferred.

Unless otherwise agreed, payment in good, cleared funds is due and payable within five (5) business days following the auction sale. Whenever the buyer pays only a part of the total purchase price for one or more lots purchased, we may apply such payments, in our sole discretion, to the lot or lots we choose. Payment will not be deemed made in full until we have received good, cleared funds for all amounts due. Title in any purchased property will not pass until full and final payment has been received by Bonhams. Accounts must be settled in full before property is released to the buyer. In the event property is released earlier, such release will not affect the passing of title or the buyer's obligation to timely remit full payment.

We reserve the right to refuse to accept payment from a source other than the registered bidder or buyer of record. Once an invoice is issued, we cannot change the buyer's name on an invoice.

Payment for purchases must be made in the currency in which the sale is conducted and may be made in or by (a) cash, up to the amount of US \$5,000 (whether by single or multiple related payments), or the equivalent in the currency in which the sale is conducted, (b) cashier's check or money order, (c) personal check with approved credit drawn on a U.S. bank, (d) wire transfer or other immediate bank transfer, or (e) Visa, MasterCard, American Express or Discover credit, charge or debit card, provided that the registered bidder or buyer's name is printed on the card. A processing fee will be assessed on any returned checks.

To the fullest extent permitted by applicable law, the buyer grants us a security interest in the property, and we may retain as collateral security for the buyer's obligations to us, any property and all monies held or received by us for the account of the buyer, in our possession. We also retain all rights of a secured party under the California Commercial

Code, and you agree that we may file financing statements without your signature. If the foregoing conditions or any other applicable conditions herein are not complied with, in addition to all other remedies available to us and the consignor by law, we may at our election: (a) hold the buyer liable for the full purchase price and any late charges, collection costs, attorneys' fees and costs, expenses and incidental damages incurred by us or the consignor arising out of the buyer's breach; (b) cancel the sale, retaining as liquidated damages all payments made by the buyer; and/or (c) cancel the sale and/or resell the purchased property, at public auction and/or by private sale, and in such event the buyer shall be liable for the payment of all consequential damages, including any deficiencies or monetary losses, and all costs and expenses of such sale or sales, our commissions at our standard rates, all other charges due hereunder, all late charges, collection costs, attorneys' fees and costs, expenses and incidental damages. In addition, where two or more amounts are owed in respect of different transactions by the buyer to us, to Bonhams 1793 Limited and/or to any of our other affiliates, subsidiaries or parent companies worldwide within the Bonhams Group, we reserve the right to apply any monies paid in respect of a transaction to discharge any amount owed by the buyer. If all fees, commissions, premiums, bid prices and other sums due to us from the buyer are not paid promptly as provided in these Conditions of Sale, we reserve the right to impose a finance charge equal to 1.5% per month (or, if lower, the maximum nonusurious rate of interest permitted by applicable law), on all amounts due to us beginning on the 31st day following the sale until payment is received, in addition to other remedies available to us by law.

5. We reserve the right to withdraw any property and to divide and combine lots at any time before such property's auction. Unless otherwise announced by the auctioneer at the time of sale, all bids are per lot as numbered in the catalog and no lots shall be divided or combined for sale.

6. We reserve the right to reject a bid from any bidder, to split any bidding increment, and to advance the bidding in any manner the auctioneer may decide. In the event of any dispute between bidders, or in the event the auctioneer doubts the validity of any bid, the auctioneer shall have sole and final discretion either to determine the successful bidder, re-open the bidding, or to cancel the sale and re-offer and resell the article in dispute. If any dispute arises after the sale, our sales records shall be conclusive in all respects.

We further reserve the right to cancel the sale of any property if (i) you are in breach of your representations and warranties as set forth in paragraph 3 above; (ii) we, in our sole discretion, determine that such transaction might be unlawful or might subject Bonhams or the consignor to any liability to any third party; or (iii) there are any other grounds for cancellation under these Conditions of Sale.

7. If we are prevented by fire, theft or any other reason whatsoever from delivering any property to the buyer or a sale otherwise cannot be completed, our liability shall be limited to the sum actually paid therefor by the buyer and shall in no event include any compensatory, incidental or consequential damages.

8. All lots in the catalog are offered subject to a reserve unless otherwise indicated in the catalog. The reserve is the confidential minimum bid price at which such lot will be sold and it does not to exceed the low estimate value for the lot. If a lot is offered subject to a reserve, we may implement such reserve by bidding on behalf of the consignor, whether by opening bidding or continuing bidding in response to other bidders until reaching the reserve. If we have an interest in an offered lot and the proceeds therefrom other than our commissions, we may bid up to the reserve to protect such interest. If the auctioneer determines that any opening or subsequent bid is below the reserve for a lot, (s)he may reject such opening bid and withdraw the item from sale. **CONSIGNORS ARE NOT ALLOWED TO BID ON THEIR OWN ITEMS.**

# Conditions of sale - Continued

9. Other than as provided in the Limited Right of Rescission with respect to identification of authorship, all property is sold "AS IS" and any statements contained in the catalog or in any advertisement, bill of sale, announcement, condition report, invoice or elsewhere as to period, culture, source, origin, media, measurements, size, quality, rarity, provenance, importance, exhibition and literature of historical relevance, merchantability, fitness for a particular purpose, or physical condition ARE QUALIFIED STATEMENTS OF OPINION AND NOT REPRESENTATIONS, WARRANTIES, OR ASSUMPTION OF LIABILITY. Neither Bonhams nor the consignor shall be responsible for any error or omission in the catalog description of any property. No employee or agent of Bonhams is authorized to make on our behalf or on that of the consignor any representation or warranty, oral or written, with respect to any property.

10. All purchased property shall be removed from the premises at which the sale is conducted by the date(s) and time(s) set forth in the "Buyer's Guide" portion of this catalog. If not so removed, daily storage fees will be payable to us by the buyer as set forth therein. We reserve the right to transfer property not so removed to an offsite warehouse at the buyer's risk and expense, as set forth in more detail in the "Buyer's Guide." Packing and handling of purchased lots are the responsibility of the buyer and at the buyer's entire risk, as are the identification, application for, and cost(s) of obtaining of any necessary export, import, restricted material (e.g. endangered species) or other permit for such lots.

For an additional fee, Bonhams may provide packing and shipping services for certain items as noted in the "Buyer's Guide" section of the catalog.

11. The copyright in the text of the catalog and the photographs, digital images and illustrations of lots in the catalog belong to Bonhams or our licensors. You will not reproduce or permit anyone else to reproduce such text, photographs, digital images or illustrations without our prior written consent. Bonhams and the consignor make no representation or warranty as to whether the buyer acquires any copyrights on the purchase of an item of Property.

12. Bonhams may, in our discretion, as a courtesy and free of charge, execute bids on your behalf if so instructed by you, provided that neither Bonhams nor our employees or agents will be liable for any error or default (whether human or otherwise) in doing so or for failing to do so. Without limiting the foregoing, Bonhams (including our agents and employees) shall not be responsible for any problem relating to telephone, online, or other bids submitted remotely through any means, including without limitation, any telecommunications or internet fault or failure, or breakdown or problems with any devices or online platforms, including third-party online platforms, regardless of whether such issue arises with our, your, or such third-party's technology, equipment, or connection. By participating at auction by telephone or online, bidders expressly consent to the recording of their bidding sessions and related communications with Bonhams and our employees and agents, and acknowledge their acceptance of these Conditions of Sale as well as any additional terms and conditions applicable to any such bidding platform or technology.

13. These Conditions of Sale shall bind the successors and assigns of all bidders and buyers and inure to the benefit of our successors and assigns. No waiver, amendment or modification of the terms hereof (other than posted notices or oral announcements during the sale) shall bind us unless specifically stated in writing and signed by us. No act or omission of Bonhams, its employees or agents, nor any failure thereof to exercise any remedy hereunder, shall operate or be deemed to operate as a waiver of Bonhams' rights under these Conditions of Sale. If any part of these Conditions of Sale is for any reason invalid or unenforceable, the rest shall remain valid and enforceable.

14. These Conditions of Sale and the buyer's and our respective rights and obligations hereunder shall be governed

by and construed and enforced in accordance with the laws of the State of California. Any dispute, controversy or claim arising out of or relating to this agreement, or the breach, termination or validity thereof, brought by or against Bonhams (but not including claims brought against the consignor by the buyer of lots consigned hereunder) shall be resolved by the procedures set forth below.

15. You accept and agree that Bonhams will hold and process your personal information and may share and use it as required by law and as described in, and in line with Bonhams' Privacy Policy, available at website at [www.bonhams.com/legals/](http://www.bonhams.com/legals/). If you desire access, update, or restriction to the use of your personal information, please email [data.protection@bonhams.com](mailto:data.protection@bonhams.com).

## SALES AND USE TAX

New York sales tax is charged on the hammer price, buyer's premium and any other applicable charges on any property collected or delivered in New York State, regardless of the state or country in which the buyer resides or does business. Buyers who make direct arrangements for collection by a shipper who is considered a "private" or "contract" carrier by the New York Department of Taxation and Finance will be charged New York sales tax, regardless of the destination of the property. Property collected for delivery to a destination outside of New York by a shipper who is considered a "common carrier" by the New York Department of Taxation and Finance (e.g. United States Postal Service, United Parcel Service, and FedEx) is not subject to New York sales tax, but if it is delivered into any state in which Bonhams is registered or otherwise conducts business sufficient to establish a nexus, Bonhams may be required by law to collect and remit the appropriate sales tax in effect in such state. Property collected for delivery outside of the United States by a freight forwarder who is registered with the Transportation Security Administration ("TSA") is not subject to New York sales tax.

## MEDIATION AND ARBITRATION PROCEDURES

(a) Within 30 days of written notice that there is a dispute, the parties or their authorized and empowered representatives shall meet by telephone and/or in person to mediate their differences. If the parties agree, a mutually acceptable mediator shall be selected and the parties will equally share such mediator's fees. The mediator shall be a retired judge or an attorney familiar with commercial law and trained in or qualified by experience in handling mediations. Any communications made during the mediation process shall not be admissible in any subsequent arbitration, mediation or judicial proceeding. All proceedings and any resolutions thereof shall be confidential, and the terms governing arbitration set forth in paragraph (c) below shall govern.

(b) If mediation does not resolve all disputes between the parties, or in any event no longer than 60 days after receipt of the written notice of dispute referred to above, the parties shall submit the dispute for binding arbitration before a single neutral arbitrator. Such arbitrator shall be a retired judge or an attorney familiar with commercial law and trained in or qualified by experience in handling arbitrations. Such arbitrator shall make all appropriate disclosures required by law. The arbitrator shall be drawn from a panel of a national arbitration service agreed to by the parties, and shall be selected as follows: (i) If the national arbitration service has specific rules or procedures, those rules or procedures shall be followed; (ii) If the national arbitration service does not have rules or procedures for the selection of an arbitrator, the arbitrator shall be an individual jointly agreed to by the parties. If the parties cannot agree on a national arbitration service, the arbitration shall be conducted by the American Arbitration Association, and the arbitrator shall be selected in accordance with the Rules of the American Arbitration Association. The arbitrator's award shall be in writing and shall set forth findings of fact and legal conclusions.

(c) Unless otherwise agreed to by the parties or provided by the published rules of the national arbitration service:

(i) the arbitration shall occur within 60 days following the selection of the arbitrator;

(ii) the arbitration shall be conducted in the designated location, as follows: (A) in any case in which the subject auction by Bonhams took place or was scheduled to take place in the State of New York or Connecticut or the Commonwealth of Massachusetts, the arbitration shall take place in New York City, New York; (B) in all other cases, the arbitration shall take place in the city of San Francisco, California; and

(iii) discovery and the procedure for the arbitration shall be as follows:

(A) All arbitration proceedings shall be confidential;

(B) The parties shall submit written briefs to the arbitrator no later than 15 days before the arbitration commences;

(C) Discovery, if any, shall be limited as follows: (i) Requests for no more than 10 categories of documents, to be provided to the requesting party within 14 days of written request thereof; (ii) No more than two (2) depositions per party, provided however, the deposition(s) are to be completed within one (1) day; (iii) Compliance with the above shall be enforced by the arbitrator in accordance with California law;

(D) Each party shall have no longer than eight (8) hours to present its position. The entire hearing before the arbitrator shall not take longer than three (3) consecutive days;

(E) The award shall be made in writing no more than 30 days following the end of the proceeding. Judgment upon the award rendered by the arbitrator may be entered by any court having jurisdiction thereof.

To the fullest extent permitted by law, and except as required by applicable arbitration rules, each party shall bear its own attorneys' fees and costs in connection with the proceedings and shall share equally the fees and expenses of the arbitrator.

## LIMITED RIGHT OF RESCISSION

If within one (1) year from the date of sale, the original buyer (a) gives written notice to us alleging that the identification of Authorship (as defined below) of such lot as set forth in the **BOLD TYPE** heading of the catalog description of such lot (as amended by any saleroom notices or verbal announcements during the sale) is not substantially correct based on a fair reading of the catalog (including the terms of any glossary contained therein), and (b) within 10 days after such notice returns the lot to us in the same condition as at the time of sale, and (c) establishes the allegation in the notice to our satisfaction (including by providing one or more written opinions by recognized experts in the field, as we may reasonably require), then the sale of such lot will be rescinded and, unless we have already paid to the consignor monies owed him in connection with the sale, the original purchase price will be refunded.

If, prior to receiving such notice from the original buyer alleging such defect, we have paid the consignor monies owed him in connection with the sale, we shall pay the original buyer the amount of our commissions, any other sale proceeds to which we are entitled and applicable taxes received from the buyer on the sale and make demand on the consignor to pay the balance of the original purchase price to the original buyer. Should the consignor fail to pay such amount promptly, we may disclose the identity of the consignor and assign to the original buyer our rights against the consignor with respect to the lot the sale of which is sought to be rescinded. Upon such disclosure and assignment, any liability of Bonhams as consignor's agent with respect to said lot shall automatically terminate.

The foregoing limited right of rescission is available to the original buyer only and may not be assigned to or relied upon

# Conditions of sale - Continued

by any subsequent transferee of the property sold. The buyer hereby accepts the benefit of the consignor's warranty of title and other representations and warranties made by the consignor for the buyer's benefit. Nothing in this section shall be construed as an admission by us of any representation of fact, express or implied, obligation or responsibility with respect to any lot. THE BUYER'S SOLE AND EXCLUSIVE REMEDY AGAINST BONHAMS FOR ANY REASON WHATSOEVER IS THE LIMITED RIGHT OF RESCISSION DESCRIBED IN THIS SECTION.

"Authorship" means only the identity of the creator, the period, culture and source or origin of the lot, as the case may be, as set forth in the **BOLD TYPE** heading of the print catalog entry. The right of rescission does not extend to: (a) works of art executed before 1870 (unless these works are determined to be counterfeits created since 1870), as this is a matter of current scholarly opinion which can change; (b) titles, descriptions, or other identification of offered lots, which information normally appears in lower case type below the **BOLD TYPE** heading identifying the Authorship; (c) Authorship of any lot where it was specifically mentioned that there exists a conflict of specialist or scholarly opinion regarding the Authorship of the lot at the time of sale; (d) Authorship of any lot which as of the date of sale was in accordance with the then generally-accepted opinion of scholars and specialists regarding the same; or (e) the identification of periods or dates of creation in catalog descriptions which may be proven inaccurate by means of scientific processes that are not generally accepted for use until after publication of the catalog in which the property is offered or that were unreasonably expensive or impractical to use at the time of such publication.

## LIMITATION OF LIABILITY

EXCEPT AS EXPRESSLY PROVIDED ABOVE, ALL PROPERTY IS SOLD "AS IS." NEITHER BONHAMS NOR THE CONSIGNOR MAKES ANY REPRESENTATION

OR WARRANTY, EXPRESS OR IMPLIED, AS TO THE MERCHANTABILITY, FITNESS OR CONDITION OF THE PROPERTY OR AS TO THE CORRECTNESS OF DESCRIPTION, GENUINENESS, ATTRIBUTION, PROVENANCE OR PERIOD OF THE PROPERTY OR AS TO WHETHER THE BUYER ACQUIRES ANY COPYRIGHTS OR OTHER INTELLECTUAL PROPERTY RIGHTS IN LOTS SOLD OR AS TO WHETHER A WORK OF ART IS SUBJECT TO THE ARTIST'S MORAL RIGHTS OR OTHER RESIDUAL RIGHTS OF THE ARTIST. THE BUYER EXPRESSLY ACKNOWLEDGES AND AGREES THAT IN NO EVENT SHALL BONHAMS BE LIABLE FOR ANY DAMAGES INCLUDING, WITHOUT LIMITATION, ANY COMPENSATORY, INCIDENTAL OR CONSEQUENTIAL DAMAGES. IN NO EVENT SHALL THE AGGREGATE LIABILITY OF BONHAMS AND ITS CONSIGNOR TO A PURCHASER EXCEED THE PURCHASE PRICE ACTUALLY PAID FOR A DISPUTED ITEM OF PROPERTY.

---

## Seller's guide

### SELLING AT AUCTION

Bonhams can help you every step of the way when you are ready to sell art, antiques and collectible items at auction. Our regional offices and representatives throughout the US are available to service all of your needs. Should you have any further questions, please visit our website at [www.bonhams.com/us](http://www.bonhams.com/us) for more information or call our Client Services Department at +1 (323) 850 7500.

### AUCTION ESTIMATES

The first step in the auction process is to determine the auction value of your property. Bonhams' world-renowned specialists will evaluate your special items at no charge and in complete confidence. You can obtain an auction estimate in many ways:

- Attend one of our Auction Evaluation Events held regularly at our galleries and in other major metropolitan areas. The updated schedule for Bonhams Auction Evaluation Events is available at [www.bonhams.com/us](http://www.bonhams.com/us).
- Call our Client Services Department to schedule a private appointment at one of our galleries. If you have a large collection, our specialists can travel, by appointment, to evaluate your property on site.
- Send clear photographs to us of each individual item, including item dimensions and other pertinent information with each picture. Photos should be sent to Bonhams' address in envelopes marked as "photo auction estimate". Alternatively, you can submit your request using our online form at [www.bonhams.com/us](http://www.bonhams.com/us). Digital images may be attached to the form. Please limit your images to no more than five (5) per item.

### CONSIGNING YOUR PROPERTY

After you receive an estimate, you may consign your property to us for sale in the next appropriate auction. Our staff assists you throughout the process, arranging transportation of your items to our galleries (at the consignor's expense), providing a detailed inventory of your consignment, and reporting the prices realized for each lot. We provide secure storage for your property in our warehouses and all items are insured throughout the auction process. You will receive payment for your property approximately 35 days after completion of sale.

Sales commissions vary with the potential auction value of the property and the particular auction in which the property is offered. Please call us for commission rates.

### PROFESSIONAL APPRAISAL SERVICES

Bonhams' specialists conduct insurance and fair market value appraisals for private collectors, corporations, museums, fiduciaries and government entities on a daily basis. Insurance appraisals, used for insurance purposes, reflect the cost of replacing property in today's retail market. Fair market value appraisals are used for estate, tax and family division purposes and reflect prices paid by a willing buyer to a willing seller.

When we conduct a private appraisal, our specialists will prepare a thorough inventory listing of all your appraised property by category. Valuations, complete descriptions and locations of items are included in the documentation.

Appraisal fees vary according to the nature of the collection, the amount of work involved, the travel distance, and whether the property is subsequently consigned for auction.

Our appraisers are available to help you anywhere and at any time. Please call our Client Services Department to schedule an appraisal.

### ESTATE SERVICES

Since 1865, Bonhams has been serving the needs of fiduciaries – lawyers, trust officers, accountants and executors – in the disposition of large and small estates. Our services are specially designed to aid in the efficient appraisal and disposition of fine art, antiques, jewelry, and collectibles. We offer a full range of estate services, ranging from flexible financial terms to tailored accounting for heirs and their agents to world-class marketing and sales support.

For more information or to obtain a detailed Trust and Estates package, please visit our website at [www.bonhams.com/us](http://www.bonhams.com/us) or contact our Client Services Department.



# Buyer's guide

## BIDDING & BUYING AT AUCTION

Whether you are an experienced bidder or an enthusiastic novice, auctions provide a stimulating atmosphere unlike any other. Bonhams previews and sales are free and open to the public. As you will find in these directions, bidding and buying at auction is easy and exciting. Should you have any further questions, please visit our website at [www.bonhams.com](http://www.bonhams.com) or call our Client Services Department at +1 (323) 850 7500.

### Catalogs

Before each auction we publish illustrated catalogs that include dates and times for previews and auctions. Our catalogs also provide descriptions and estimated values for each "lot." A lot may refer to a single item or to a group of items auctioned together. We offer our catalogs by subscription or by single copy. For information on subscribing to our catalogs, you may refer to the subscription form in this catalog, call our Client Services Department, or visit our website at [www.bonhams.com/us](http://www.bonhams.com/us).

### Previews

Auction previews are your chance to inspect each lot prior to the auction. We encourage you to look closely and examine each object on which you may want to bid so that you will know as much as possible about it. Items are sold "as is" and with all faults; illustrations in our catalogs, website and other materials are provided for identification only. At the previews, our staff is always available to answer your questions and guide you through the auction process. Condition reports may be available upon request.

### Estimates

Bonhams catalogs include estimates for each lot, exclusive of buyer's premium and tax. The estimates are provided as an approximate guide to current market value and should not be interpreted as a representation or prediction of actual selling prices. They are determined well in advance of a sale and are subject to revision. Please contact us should you have any questions about value estimates.

### Reserves

All lots in a catalog are subject to a reserve unless otherwise indicated. The reserve is the minimum price that the seller is willing to accept for a lot. This amount is confidential and does not exceed the low estimated value.

## BIDDING AT AUCTION

At Bonhams, you can bid in many ways: in person, via absentee bid, over the phone, or via Bonhams' online bidding facility. Absentee bids can be submitted in person, online, via fax or via email.

A valid Bonhams client account is required to participate in bidding activity. You can obtain registration information online, at the reception desk or by calling our Client Services Department.

By bidding at auction, whether in person or by agent, by absentee bid, telephone, online or other means, the buyer or bidder agrees to be bound by the Conditions of Sale.

Lots are auctioned in consecutive numerical order as they appear in the catalog. Bidding normally begins below the low estimate. The auctioneer will accept bids from interested parties present in the saleroom, from telephone bidders, and from absentee bidders who have left written bids in advance of the sale. The auctioneer may also execute bids on behalf of the consignor up to the amount of the reserve, but never above it.

We assume no responsibility for failure to execute bids for any reason whatsoever.

### In Person

If you are planning to bid at auction, you will need to register at the reception desk in order to receive a numbered bid card. To place a bid, hold up your card so that the auctioneer can clearly see it. Decide on the maximum amount that you wish to pay, exclusive of buyer's premium and tax, and continue bidding until your bid prevails or you reach your limit. If you are the successful bidder on a lot, the auctioneer will acknowledge your paddle number and bid amount.

### Absentee Bids

As a service to those wishing to place bids, we may at our discretion accept bids without charge in advance of sale by telephone, by facsimile or in writing on bidding forms available from us. "Buy" bids will not be accepted; all bids must state the highest bid price the bidder is willing to pay. Our auction staff will try to bid just as you would, with the goal of obtaining the

item at the lowest bid price possible. In the event identical bids are submitted, the earliest bid submitted will take precedence. Absentee bids shall be executed in competition with other absentee bids, any applicable reserve, and bids from other auction participants. A friend or agent may place bids on your behalf, provided that we have received your written authorization prior to the sale. Absentee bid forms are available in our catalogs, online at [www.bonhams.com/us](http://www.bonhams.com/us), and at our San Francisco, Los Angeles and New York galleries.

### By Telephone

Under special circumstances, we can arrange for you to bid by telephone. To arrange for a telephone bid, please contact our Client Services Department a minimum of 24 hours prior to the sale.

### Online

Web users may place absentee bids online from anywhere in the world. To bid online, please visit our website at [www.bonhams.com/us](http://www.bonhams.com/us).

We are pleased to make our live online bidding facility available to bidders in this sale.

Additional terms and conditions of sale relating to online bidding will apply. Please see [www.bonhams.com/25333](http://www.bonhams.com/25333) or contact the Client Services Department to obtain information and learn how you can register and bid online in this sale.

### Bid Increments

Bonhams generally uses the following increment multiples as bidding progresses:

\$50-200 .....	by \$10s
\$200-500 .....	by \$20/50/80s
\$500-1,000 .....	by \$50s
\$1,000-2,000 .....	by \$100s
\$2,000-5,000 .....	by \$200/500/800s
\$5,000-10,000 .....	by \$500s
\$10,000-20,000 .....	by \$1,000s
\$20,000-50,000 .....	by \$2,000/5,000/8,000s
\$50,000-100,000 .....	by \$5,000s
\$100,000-200,000 .....	by \$10,000s
above \$200,000 .....	at auctioneer's discretion

**The auctioneer may split or reject any bid at any time at his or her discretion as outlined in the Conditions of Sale.**

### Currency Converter

Solely for the convenience of bidders, a currency converter may be provided at Bonhams sales. The rates quoted for conversion of other currencies to U.S. Dollars are indications only and should not be relied upon by a bidder, and neither Bonhams nor its agents shall be responsible for any errors or omissions in the operation or accuracy of the currency converter.

### Buyer's Premium

A buyer's premium is added to the winning bid price of each individual lot purchased, at the rates set forth in the Conditions of Sale. The winning bid price plus the premium constitute the purchase price for the lot. Applicable sales taxes are computed based on this figure, and the total becomes your final purchase price.

Unless specifically illustrated and noted, fine art frames are not included in the estimate or purchase price. Bonhams accepts no liability for damage or loss to frames during storage or shipment.

All sales are final and subject to the Conditions of Sale found in our catalogs, on our website, and available at the reception desk.

### Payment

All buyers are asked to pay and pick up by 3pm on the business day following the auction. Payment may be made to Bonhams by cash, checks drawn on a U.S. bank, money order, wire transfer, or by Visa, MasterCard, American Express or Discover credit or charge card or debit card. All items must be paid for within 5 business days of the sale. Please note that payment by personal or business check may result in property not being released until purchase funds clear our bank.

### Sales Tax

Residents of states listed in Paragraph 1 of the Conditions of Sale must pay applicable sales tax. Other state or local taxes (or compensation use taxes) may apply. Sales tax will be automatically added to the invoice unless a valid resale number has been furnished or the property is shipped via common carrier to destinations outside the states listed in

the Conditions of Sale. If you wish to use your resale license please contact Cashiers for our form.

### Shipping & Removal

Bonhams can accommodate shipping for certain items. Please contact our Cashiers Department for more information or to obtain a quote. Refer to Conditions of Sale for special terms governing the shipment of Arms and Wine. Shipments are made during weekday business hours up to four weeks after payment is received. Carriers are not permitted to deliver to P.O. Boxes.

International buyers are responsible for all import/export customs duties and taxes. An invoice stating the actual purchase price(s) will accompany all international purchases.

### Simultaneous sale property collection notice:

If this sale previews in multiple cities, please see the title page for details regarding final location of property for collection.

### Auction Results

Auction results are usually available on the next business day following the sale or online at [www.bonhams.com/us](http://www.bonhams.com/us).

# Bonhams Specialist Departments

---

## 19th Century Paintings

London  
Charles O' Brien  
+44 20 7468 8360  
New York  
Madalina Lazen  
+1 212 644 9108

## 20th Century British Art

London  
Matthew Bradbury  
+44 20 7468 8295

## 20th Century Fine Art

San Francisco  
Sonja Moro  
+1 415 694 9002

## Aboriginal Art

Australia  
Francesca Cavazzini  
+61 2 8412 2222

## African, Oceanic & Pre-Columbian Art

Los Angeles  
Fredric W. Backlar  
+1 323 436 5416 •

## American Paintings

New York  
Jennifer Jacobsen  
+1 917 206 1699

## Antiquities

London  
Francesca Hickin  
+44 20 7468 8226

## Antique Arms & Armour

London  
David Williams  
+44 20 7393 3807

## Art Collections, Estates & Valuations

London  
Harvey Cammell  
+44 (0) 20 7468 8340  
New York  
Sherri Cohen  
+1 917 206 1671  
Los Angeles  
Leslie Wright  
+1 323 436 5408  
Joseph Francaviglia  
+1 323 436 5443  
Lydia Ganley  
+1 323 436 4496  
San Francisco  
Victoria Richardson  
+1 415 503 3207  
Celeste Smith  
+1 415 503 3214

## Australian Art

Australia  
Merryn Schriever  
+61 2 8412 2222  
Alex Clark  
+61 3 8640 4088

## Australian Colonial Furniture and Australiana

+61 2 8412 2222

## Books, Maps & Manuscripts

London  
Matthew Haley  
+44 20 7393 3817  
New York  
Ian Ehling  
+1 212 644 9094  
Darren Sutherland  
+1 212 461 6531  
Los Angeles  
Catherine Williamson  
+1 323 436 5442  
San Francisco  
Adam Stackhouse  
+1 415 503 3266

## British & European Glass

London  
Fergus Gambon  
+44 20 7468 8245

## British Ceramics

London  
Fergus Gambon  
+44 20 7468 8245

## California & Western Paintings & Sculpture

Los Angeles  
Scot Levitt  
+1 323 436 5425  
Kathy Wong  
+1 323 436 5415  
San Francisco  
Aaron Bastian  
+1 415 503 3241

## Carpets

London  
Helena Gumley-Mason  
+44 20 8393 2615

## Chinese & Asian Art

London  
Asaph Hyman  
+44 20 7468 5888  
Rosangela Assennato  
+44 20 7393 3883  
Edinburgh  
Ian Glennie  
+44 131 240 2299  
New York  
Bruce MacLaren  
+1 917 206 1677  
Los Angeles  
Rachel Du  
+1 323 436 5587  
San Francisco  
Dessa Goddard  
+1 415 503 3333  
Hong Kong  
Xibo Wang  
+852 3607 0010  
Sydney  
Yvett Klein  
+61 2 8412 2231

## Chinese Paintings

Hong Kong  
Iris Miao  
+852 3607 0011

## Clocks

London  
James Stratton  
+44 20 7468 8364  
New York  
Jonathan Snellenburg  
+1 212 461 6530

## Coins & Medals

London  
John Millensted  
+44 20 7393 3914  
Los Angeles  
Paul Song  
+1 323 436 5455

## Entertainment Memorabilia

London  
Katherine Schofield  
+44 20 7393 3871  
Los Angeles  
Catherine Williamson  
+1 323 436 5442  
Dana Hawkes  
+1 978 283 1518

## European Ceramics

London  
Sebastian Kuhn  
+44 20 7468 8384

## European Paintings

London  
Charles O' Brien  
+44 20 7468 8360  
New York  
Madalina Lazen  
+1 212 644 9108  
Los Angeles  
Rocco Rich  
+1 323 436 5410

## European Sculptures & Works of Art

London  
Michael Lake  
+44 20 8963 6813

## Furniture and Decorative Art

London  
Thomas Moore  
+44 20 8963 2816  
Los Angeles  
Angela Past  
+1 323 436 5422  
Anna Hicks  
+1 323 436 5463  
San Francisco  
Jeffrey Smith  
+1 415 215 7385

## Greek Art

London  
Anastasia Orfanidou  
+44 20 7468 8356

## Golf Sporting Memorabilia

Edinburgh  
Kevin McGimpsey  
Hamish Wilson  
+44 131 240 0916

## Irish Art

London  
Penny Day  
+44 20 7468 8366

## Impressionist & Modern Art

London  
India Phillips  
+44 20 7468 8328  
New York  
Molly Ott Ambler  
+1 917 206 1627  
Los Angeles  
Kathy Wong  
+1 323 436 5415

## Indian, Himalayan & Southeast Asian Art

Hong Kong  
Edward Wilkinson  
+852 2918 4321  
New York  
Mark Rasmussen  
+1 917 206 1688

## Islamic & Indian Art

London  
Oliver White  
+44 20 7468 8303

## Japanese Art

London  
Suzannah Yip  
+44 20 7468 8368  
New York  
Jeff Olson  
+1 212 461 6516

## Jewellery

London  
Jean Ghika  
+44 20 7468 8282  
Emily Barber  
+44 20 7468 8284  
New York  
Brett O'Connor  
+1 212 461 6525  
Caroline Morrissey  
+1 212 644 9046  
Leslie Roskind  
+1 212 644 9035  
Los Angeles  
Emily Waterfall  
+1 323 436 5426  
San Francisco  
Shannon Beck  
+1 415 503 3306  
Hong Kong  
Anastasia Chao  
+852 3607 0007  
Ellen Sin  
+852 3607 0017

## Marine Art

London  
Veronique Scorer  
+44 20 7393 3962

**Mechanical Music**

London  
Jon Baddeley  
+44 20 7393 3872

**Modern & Contemporary  
African Art**

London  
Giles Peppiatt  
+ 44 20 7468 8355  
New York  
Hayley Grundy  
+1 917 206 1624

**Modern & Contemporary  
Middle Eastern Art**

London  
Nima Sagharchi  
+44 20 7468 8342

**Modern & Contemporary  
South Asian Art**

London  
Tahmina Ghaffar  
+44 207 468 8382

**Modern Decorative  
Art + Design**

London  
Mark Oliver  
+44 20 7393 3856  
New York  
Benjamin Walker  
+1 212 710 1306  
Dan Tolson  
+1 917 206 1611  
Los Angeles  
Jason Stein  
+1 323 436 5466

**Motor Cars**

London  
Tim Schofield  
+44 20 7468 5804  
New York  
Rupert Banner  
+1 212 461 6515  
Eric Minoff  
1 917 206 1630  
Evan Ide  
+1 917 340 4657  
Los Angeles  
Jakob Greisen  
+1 415 503 3284  
Michael Caimano  
+1 929 666 2243  
San Francisco  
Mark Osborne  
+1 415 503 3353  
Europe  
Phillip Kantor  
+32 476 879 471

**Automobilia**

London  
Toby Wilson  
+44 20 8963 2842  
Adrian Pipiros  
+44 20 8963 2840

**Motorcycles**

London  
Ben Walker  
+44 20 8963 2819  
James Stensel  
+44 20 8963 2818  
Los Angeles  
Craig Mallery  
+1 323 436 5470

**Museum Services**

San Francisco  
Laura King Pfaff  
+1 415 503 3210

**Native American Art**

Los Angeles  
Ingmars Lindbergs  
+1 415 503 3393  
Kim Jarand  
+1 323 436 5430

**Natural History**

Los Angeles  
Claudia Florian  
+1 323 436 5437  
Thomas E. Lindgren  
+1 310 469 8567 •

**Old Master Pictures**

London  
Andrew Mckenzie  
+44 20 7468 8261

**Orientalist Art**

London  
Charles O'Brien  
+44 20 7468 8360

**Photography**

New York  
Laura Paterson  
+1 917 206 1653

**Post-War and  
Contemporary Art**

London  
Ralph Taylor  
+44 20 7447 7403  
Giacomo Balsamo  
+44 20 7468 5837  
New York  
Muys Sniijders  
+212 644 9020  
Jacqueline Towers-Perkins  
+1 212 644 9039  
Lisa De Simone  
+1 917 206 1607  
Los Angeles  
Sharon Squires  
+1 323 436 5404  
Laura Bjorstad  
+1 323 436 5446

**Prints and Multiples**

London  
Lucia Tro Santafe  
+44 20 7468 8262  
New York  
Deborah Ripley  
+1 212 644 9059  
Los Angeles  
Morisa Rosenberg  
+1 323 436 5435

**Russian Art**

London  
Daria Khristova  
+44 20 7468 8334  
New York  
Yelena Harbick  
+1 212 644 9136

**Scientific Instruments**

London  
Jon Baddeley  
+44 20 7393 3872  
New York  
Jonathan Snellenburg  
+1 212 461 6530

**Scottish Pictures**

Edinburgh  
Chris Brickley  
+44 131 240 2297

**Silver & Gold Boxes**

London  
Ellis Finch  
+44 20 7393 3973

**Sporting Guns**

London  
William Threlfall  
+44 20 7393 3815

**Space History**

San Francisco  
Adam Stackhouse  
+1 415 503 3266

**Travel Pictures**

London  
Veronique Scorer  
+44 20 7393 3962

**Watches &  
Wristwatches**

London  
Jonathan Darracott  
+44 20 7447 7412  
New York  
Jonathan Snellenburg  
+1 212 461 6530  
Hong Kong  
Tim Bourne  
+852 3607 0021

**Whisky**

Edinburgh  
Martin Green  
+44 131 225 2266  
Hong Kong  
Daniel Lam  
+852 2918 4321

**Wine**

London  
Richard Harvey  
+44 20 7468 5811  
San Francisco  
Christine Ballard  
+1 415 503 3221  
Hong Kong  
Daniel Lam  
+852 2918 4321

**Client Services Departments****U.S.A.****San Francisco**

(415) 861 7500  
(415) 861 8951 fax  
Monday - Friday, 9am to 5pm

**Los Angeles**

(323) 850 7500  
(323) 850 6090 fax  
Monday - Friday, 9am to 5pm

**New York**

(212) 644 9001  
(212) 644 9009 fax  
Monday - Friday, 9am to 5pm

**Toll Free**

(800) 223 2854

**U.K.**

Monday to Friday 8.30 to 6.00  
+44 (0) 20 7447 7447

**Bids**

+44 (0) 20 7447 7447  
+44 (0) 20 7447 7401 fax  
To bid via the internet please visit  
bonhams.com

• Indicates independent contractor

# Bonhams Global Network

---

## International Salerooms

### London

101 New Bond Street  
London W1S 1SR  
+44 20 7447 7447  
+44 20 7447 7400 fax

### New York

580 Madison Avenue  
New York, NY 10022  
+1 (212) 644 9001  
+1 (212) 644 9007 fax

### Hong Kong

Suite 2001  
One Pacific Place  
88 Queensway  
Admiralty  
Hong Kong  
+852 2918 4321  
+852 2918 4320 fax

## Offices and Associated Companies

### Africa

#### Nigeria

Neil Coventry  
+234 (0) 8110 033 792  
+27 (0) 7611 20171  
neil.coventry@  
bonhams.com

#### South Africa - Johannesburg

Penny Culverwell  
+27 (0) 71 342 2670  
penny.culverwell@  
bonhams.com

### Australia

#### Sydney

97-99 Queen Street,  
Woollahra, NSW 2025  
Australia  
+61 (0) 2 8412 2222  
+61 (0) 2 9475 4110 fax  
info.aus@bonhams.com

#### Melbourne

1130 High St  
Armadale VIC 3143  
Australia  
+61 (0) 3 8640 4088  
+61 (0) 2 9475 4110 fax  
info.aus@bonhams.com

### Asia

#### Beijing

Vivian Zhang  
Unit S102A, Beijing  
Lufthansa Center,  
50 Liangmaqiao Road,  
Chaoyang District,  
Beijing 100125, China  
+86 (0) 10 8424 3188  
beijing@bonhams.com

#### Singapore

Bernadette Rankine  
11th Floor, Wisma Atria  
435 Orchard Road  
Singapore 238877  
+65 (0) 6701 8038  
+65 (0) 6701 8001 fax  
bernadette.rankine@  
bonhams.com

#### Taiwan

Bobbie Hu  
37th Floor,  
Taipei 101 Tower  
No. 7 Xinyi Road,  
Section 5  
Taipei, 100  
+886 2 8758 2898  
+886 2 8758 2897 fax  
taiwan@bonhams.com

### Europe

#### Austria

Thomas Kamm  
thomas.kamm@  
bonhams.com  
+49 900 89 2420 5812  
austria@bonhams.com

#### Belgium

Christine De Schaetzen  
christine.deschaetzen@  
bonhams.com  
Boulevard Saint  
Michel 101  
1040 Brussels  
+32 (0) 2 736 5076  
belgium@bonhams.com

#### France

Catherine Yaiche  
catherine.yaiche@  
bonhams.com  
4 rue de la Paix  
75002 Paris  
+33 (0) 1 42 61 10 10  
paris@bonhams.com

#### Germany - Cologne

Katharina Schmid  
katharina.schmid@  
bonhams.com  
+49 (0) 221 9865 3419  
+49 (0) 157 9234 6717  
cologne@bonhams.com

#### Germany - Munich

Thomas Kamm  
thomas.kamm@  
bonhams.com  
Maximilianstrasse 52  
80538 Munich  
+49 (0) 89 2420 5812  
munich@bonhams.com

#### Germany - Stuttgart Katharina Schmid

katharina.schmid@  
bonhams.com  
Neue Brücke 2  
New Bridge Offices  
70173 Stuttgart  
+49 (0) 711 2195 2640  
+49 (0) 157 9234 6717  
stuttgart@bonhams.com

#### Greece

7 Neofytou Vamva  
Street  
Athens 10674  
+30 (0) 210 3636 404  
athens@bonhams.com

#### Ireland

Kieran O'Boyle  
kieran.o'boyle@  
bonhams.com  
31 Molesworth Street  
Dublin 2  
+353 (0) 1 602 0990  
ireland@bonhams.com

#### Italy - Milan

Luca Curradi  
luca.curradi@  
bonhams.com  
Via Boccaccio 22  
20123 Milano  
+39 0 2 4953 9020  
milan@bonhams.com

#### Italy - Rome

Emma Dalla Libera  
emma.dallalibera@  
bonhams.com  
Via Sicilia 50  
00187 Roma  
+39 06 485 900  
rome@bonhams.com

#### The Netherlands

Koen Samson  
koen.samson@  
bonhams.com  
De Lairessestraat 154  
1075 HL Amsterdam  
+31 (0) 20 67 09 701  
amsterdam@  
bonhams.com

#### Portugal

Filipa De Andrade  
filipa.deandrade@  
bonhams.com  
Rua Bartolomeu Dias  
no160. 1o  
Belem  
1400-031 Lisbon  
+351 218 293 291  
portugal@bonhams.com

#### Spain - Barcelona & North

Teresa Ybarra  
teresa.ybarra@  
bonhams.com  
+34 930 156 686  
+34 680 347 606  
barcelona@  
bonhams.com

#### Spain - Madrid

Johann Leibbrandt  
johann.leibbrandt@  
bonhams.com  
Núñez de Balboa  
no 4-1C  
28001 Madrid  
+34 915 78 17 27

#### Switzerland - Geneva

Livie Gallone Moeller  
livie.gallonemoeller@  
bonhams.com  
Rue Etienne-Dumont 10  
1204 Geneva  
+41 22 300 3160  
geneva@bonhams.com

#### Switzerland - Zurich

Andrea Bodmer  
andrea.bodmer@  
bonhams.com  
Dreikönigstrasse 31a  
8002 Zürich  
+41 44 281 9535  
zurich@bonhams.com

### North America

#### USA

Representatives:

##### Arizona

Terri Adrian-Hardy  
terri.hardy@  
bonhams.com  
+1 (602) 859 1843  
arizona@bonhams.com

##### California

Central Valley  
David Daniel  
david.daniel@  
bonhams.com  
+1 (916) 364 1645  
nevada@bonhams.com

##### California - Palm Springs

Brooke Sivo  
brooke.sivo@  
bonhams.com  
+1 (760) 350 4255  
palmssprings@  
bonhams.com

##### California - San Diego

Brooke Sivo  
brooke.sivo@  
bonhams.com  
+1 (760) 567 1744  
sandiego@  
bonhams.com

##### Colorado

Lance Vigil  
lance.vigil@  
bonhams.com  
+1 (720) 355 3737  
colorado@  
bonhams.com

##### Florida

April Matteini  
april.matteini@  
bonhams.com  
+1 (305) 978 2459  
Alexis Butler  
alexis.butler@  
bonhams.com  
+1 (305) 878 5366  
miami@bonhams.com

#### Georgia

Mary Moore Bethea  
mary.bethea@  
bonhams.com  
+1 (404) 842 1500  
georgia@bonhams.com

#### Illinois & Midwest

Natalie B. Waechter  
natalie.waechter@  
bonhams.com  
+1 (773) 267 3300  
Shawn Marsh  
shawn.marsh@  
bonhams.com  
+1 (773) 680 2881  
chicago@bonhams.com

#### Massachusetts & New England

Amy Corcoran  
amy.corcoran@  
bonhams.com  
+1 (617) 742 0909  
boston@bonhams.com

#### Nevada

David Daniel  
david.daniel@  
bonhams.com  
+1 (775) 831 0330  
nevada@bonhams.com

#### New Mexico

Terri Adrian-Hardy  
terri.hardy@  
bonhams.com  
+1 (602) 859 1843  
newmexico@  
bonhams.com

#### Oregon & Idaho

Sheryl Acheson  
sheryl.acheson@  
bonhams.com  
+1 (971) 727 7797  
oregon@bonhams.com

#### Philadelphia – Pennsylvania

Caitlyn Pickens  
caitlyn.pickens@  
bonhams.com  
+1 (267) 792 3172  
philadelphia@  
bonhams.com



---

**London**

Montpelier Street London  
SW7 1HH  
+44 20 7393 3900  
+44 20 7393 3905 fax

**Edinburgh**

22 Queen Street  
Edinburgh  
EH2 1JX  
+44 131 225 2266  
+44 131 220 2547 fax

**Los Angeles**

7601 W. Sunset Boulevard  
Los Angeles  
CA 90046  
+1 (323) 850 7500  
+1 (323) 850 6090 fax

**Texas - Dallas**

Mary Holm  
mary.holm@  
bonhams.com  
+1 (214) 557 2716  
dallas@bonhams.com

**Texas - Houston**

Lindsay Davis  
lindsay.davis@  
bonhams.com  
+1 (713) 855 7452  
texas@bonhams.com

**Virginia**

Gertraud Hechl  
gertraud.hechl@  
bonhams.com  
+1 (202) 422 2733  
virginia@  
bonhams.com

**Washington  
& Alaska**

Heather O'Mahony  
heather.omahony@  
bonhams.com  
+1 (206) 566 3913  
seattle@  
bonhams.com

**Washington DC  
Mid-Atlantic Region**

Gertraud Hechl  
gertraud.hechl@  
bonhams.com  
+1 (202) 422 2733  
washingtonDC@  
bonhams.com

**Canada****Toronto, Ontario**

Kristin Kearney  
340 King St East  
2nd floor, Office 213  
Toronto ON  
M5A 1 KB  
kristin.kearney@  
bonhams.com  
+1 (416) 462 9004  
info.ca@  
bonhams.com

**Montreal, Quebec**

+1 (514) 209 2377  
info.ca@  
bonhams.com

**Middle East****Israel**

Joslyne Halibard  
joslyne.halibard@  
bonhams.com  
+972 (0) 54 553 5337

**United  
Kingdom****South East  
England****Guildford**

Millmead,  
Guildford,  
Surrey GU2 4BE  
+44 1483 504 030  
guildford@  
bonhams.com

**Isle of Wight**

+44 1273 220 000  
isleofwight@  
bonhams.com

Representative:

**Brighton & Hove**

Tim Squire-Sanders  
+44 1273 220 000  
hove@bonhams.com

**West Sussex**

+44 (0) 1273 220 000  
sussex@  
bonhams.com

**South West  
England****Bath**

Queen Square House  
Charlotte Street  
Bath, BA1 2LL  
+44 1225 788 988  
bath@bonhams.com

**Cornwall - Truro**

36 Lemon Street  
Truro  
Cornwall  
TR1 2NR  
+44 1872 250 170  
truro@bonhams.com

**Exeter**

The Lodge  
Southernhay West  
Exeter, Devon  
EX1 1JG  
+44 1392 425 264  
exeter@bonhams.com

**Tetbury**

Eight Bells House  
14 Church Street  
Tetbury  
Gloucestershire  
GL8 8JG  
+44 1666 502 200  
tetbury\_office@  
bonhams.com

Representatives:

**Dorset**

Matthew Lacey  
+44 1935 815 271

**East Anglia and  
Bury St. Edmunds**  
Michael Steel  
+44 1284 716 190  
bury@bonhams.com

**Norfolk**

The Market Place  
Reepham  
Norfolk, NR10 4JJ  
+44 1603 871 443  
norfolk@  
bonhams.com

**Midlands****Knowle**

The Old House  
Station Road  
Knowle, Solihull  
West Midlands  
B93 0HT  
+44 1564 776 151  
knowle@  
bonhams.com

**Oxford**

Banbury Road  
Shipton on Cherwell  
Kidlington OX5 1JH  
+44 1865 853 640  
oxford@  
bonhams.com

Bonhams MPH  
The Guard House  
Bicester Heritage  
Bicester, Oxfordshire  
OX26 5HA  
+44 1869 229 477  
mph@bonhams.com

**Yorkshire & North  
East England****Leeds**

The West Wing  
Bowcliffe Hall  
Bramham  
Leeds, LS23 6LP  
+44 113 234 5755  
leeds@bonhams.com

**North West England****Chester**

2 St Johns Court  
Vicars Lane  
Chester, CH1 1QE  
+44 1244 313 936  
chester@  
bonhams.com

**Manchester**

The Stables  
213 Ashley Road  
Hale, WA15 9TB  
+44 161 927 3822  
manchester@  
bonhams.com

**Channel Islands****Jersey**

La Chasse  
La Rue de la Vallee  
St Mary  
Jersey, JE3 3DL  
+44 1534 722 441  
jersey@bonhams.com

Representative:

**Guernsey**

+44 1481 722 448  
guernsey@  
bonhams.com

**Scotland****Bonhams West  
of Scotland**

Kirkhill House  
Broom Road East  
Newton Mearns  
Glasgow, G77 5LL  
+44 141 223 8866  
glasgow@  
bonhams.com

**Wales**

Representatives:

**Cardiff**

Jeff Muse  
+44 2920 727 980  
cardiff@bonhams.com

# Auction Registration Form

(Attendee / Absentee / Online / Telephone Bidding)  
Please circle your bidding method above.

--	--	--	--

**Paddle number (for office use only)**

**General Notice:** This sale will be conducted in accordance with Bonhams Conditions of Sale, and your bidding and buying at the sale will be governed by such terms and conditions. Please read the Conditions of Sale in conjunction with the Buyer's Guide relating to this sale and other published notices and terms relating to bidding. Payment by personal or business check may result in your property not being released until purchase funds clear our bank. Checks must be drawn on a U.S. bank.

**Notice to Absentee Bidders:** In the table below, please provide details of the lots on which you wish to place bids at least 24 hours prior to the sale. Bids will be rounded down to the nearest increment. Please refer to the Buyer's Guide in the catalog for further information relating to instructions to Bonhams to execute absentee bids on your behalf. Bonhams will endeavor to execute bids on your behalf but will not be liable for any errors or non-executed bids.

**Notice to First Time Bidders:** New clients are requested to provide photographic proof of ID - passport, driving license, ID card, together with proof of address - utility bill, bank or credit card statement etc. Corporate clients should also provide a copy of their articles of association / company registration documents, together with a letter authorizing the individual to bid on the company's behalf. Failure to provide this may result in your bids not being processed. For higher value lots you may also be asked to provide a bankers reference.

**Notice to online bidders;** If you have forgotten your username and password for [www.bonhams.com](http://www.bonhams.com), please contact Client Services.

**If successful**

- I will collect the purchases myself
- Please contact me with a shipping quote (if applicable)
- I will arrange a third party to collect my purchase(s)

**Please email or fax the completed Registration Form and requested information to:**

Bonhams Client Services Department  
7601 W. Sunset Blvd  
Los Angeles, California 90046  
Tel +1 (323) 850 7500  
Fax +1 (323) 850 6090  
bids.us@bonhams.com

# Bonhams

Sale title: California Jewels	Sale date: Thursday December 12, 2019
Sale no. 25333	Sale venue: Los Angeles
<b>General Bid Increments:</b> \$10 - 200 .....by 10s \$200 - 500 .....by 20 / 50 / 80s \$500 - 1,000 .....by 50s \$1,000 - 2,000 .....by 100s \$2,000 - 5,000 .....by 200 / 500 / 800s \$5,000 - 10,000 .....by 500s \$10,000 - 20,000 .....by 1,000s \$20,000 - 50,000 .....by 2,000 / 5,000 / 8,000s \$50,000 - 100,000 .....by 5,000s \$100,000 - 200,000 .....by 10,000s above \$200,000 .....at the auctioneer's discretion The auctioneer has discretion to split any bid at any time.	
Customer Number	Title
First Name	Last Name
Company name (to be invoiced if applicable)	
Address	
City	County / State
Post / Zip code	Country
Telephone mobile	Telephone daytime
Telephone evening	Fax
Telephone bidders: indicate primary and secondary contact numbers by writing ① or ② next to the telephone number.	
E-mail (in capitals) _____	
By providing your email address above, you authorize Bonhams to send you marketing materials and news concerning Bonhams and partner organizations. Bonhams does not sell or trade email addresses.	
I am registering to bid as a private client <input type="checkbox"/>	I am registering to bid as a trade client <input type="checkbox"/>
Resale: please enter your resale license number here _____ We may contact you for additional information.	

SHIPPING	
Shipping Address (if different than above):	
Address: _____	Country: _____
City: _____	Post/ZIP code: _____

**Please note that all telephone calls are recorded.**

Type of bid (A-Absentee, T-Telephone)	Lot no.	Brief description (In the event of any discrepancy, lot number and not lot description will govern.) If you are bidding online there is no need to complete this section.	MAX bid in US\$ (excluding premium and applicable tax) Emergency bid for telephone bidders only*

**You instruct us to execute each absentee bid up to the corresponding bid amount indicated above.**

\* Emergency Bid: A maximum bid (exclusive of Buyer's Premium and tax) to be executed by Bonhams only if we are unable to contact you by telephone or should the connection be lost during bidding.

BY SIGNING THIS FORM YOU AGREE THAT YOU HAVE READ AND UNDERSTAND OUR CONDITIONS OF SALE AND SHALL BE LEGALLY BOUND BY THEM, AND YOU AGREE TO PAY THE BUYER'S PREMIUM, ANY APPLICABLE TAXES, AND ANY OTHER CHARGES MENTIONED IN THE BUYER'S GUIDE OR CONDITIONS OF SALE. THIS AFFECTS YOUR LEGAL RIGHTS.	
Your signature: _____	Date: _____





**Bonhams**  
7601 W. Sunset Boulevard  
Los Angeles, California 90046

+1 323 850 7500  
bonhams.com

**AUCTIONEERS SINCE 1793**